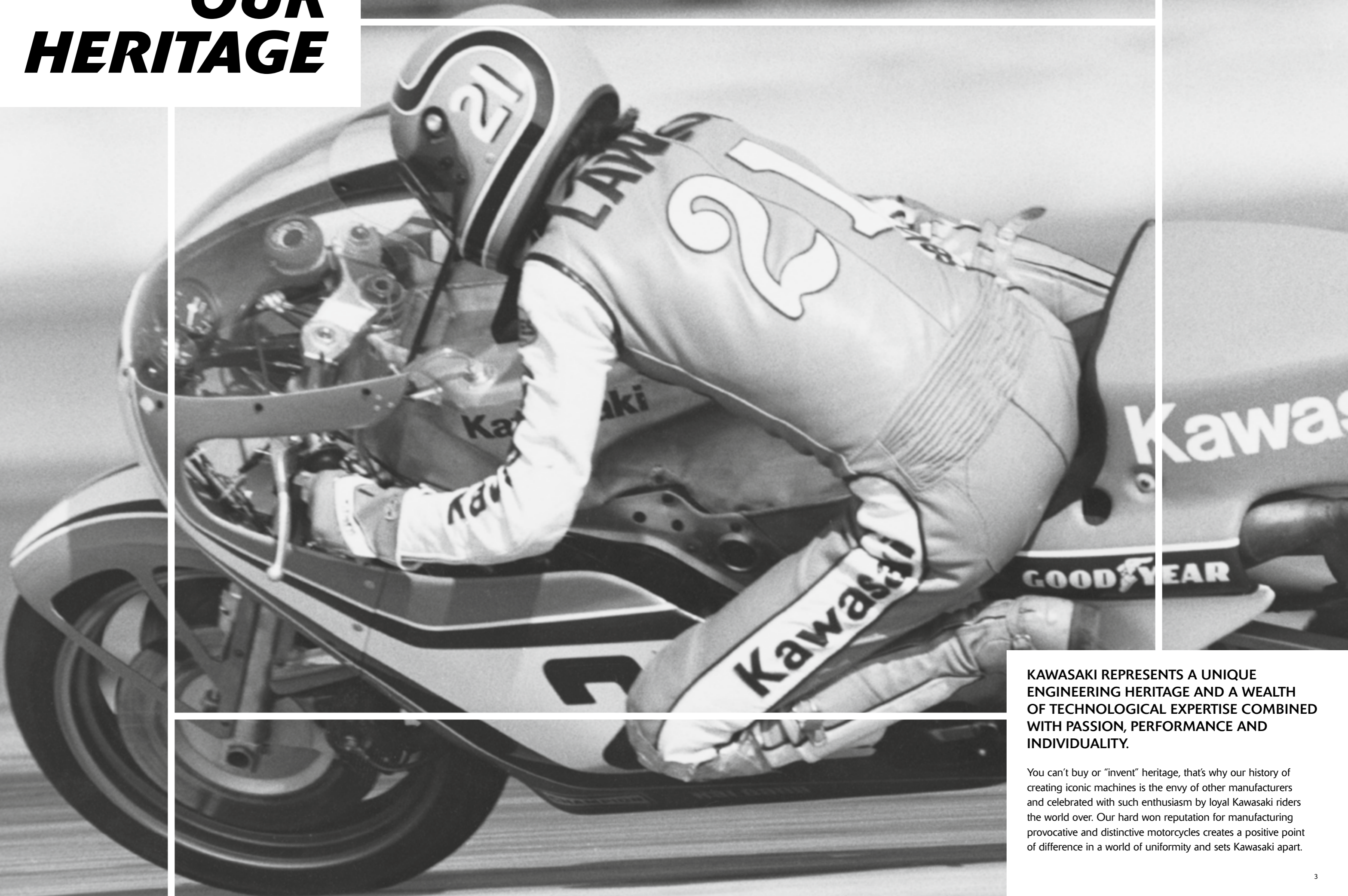


**CLOTHING &
MERCHANDISE
2016**



Kawasaki

OUR HERITAGE

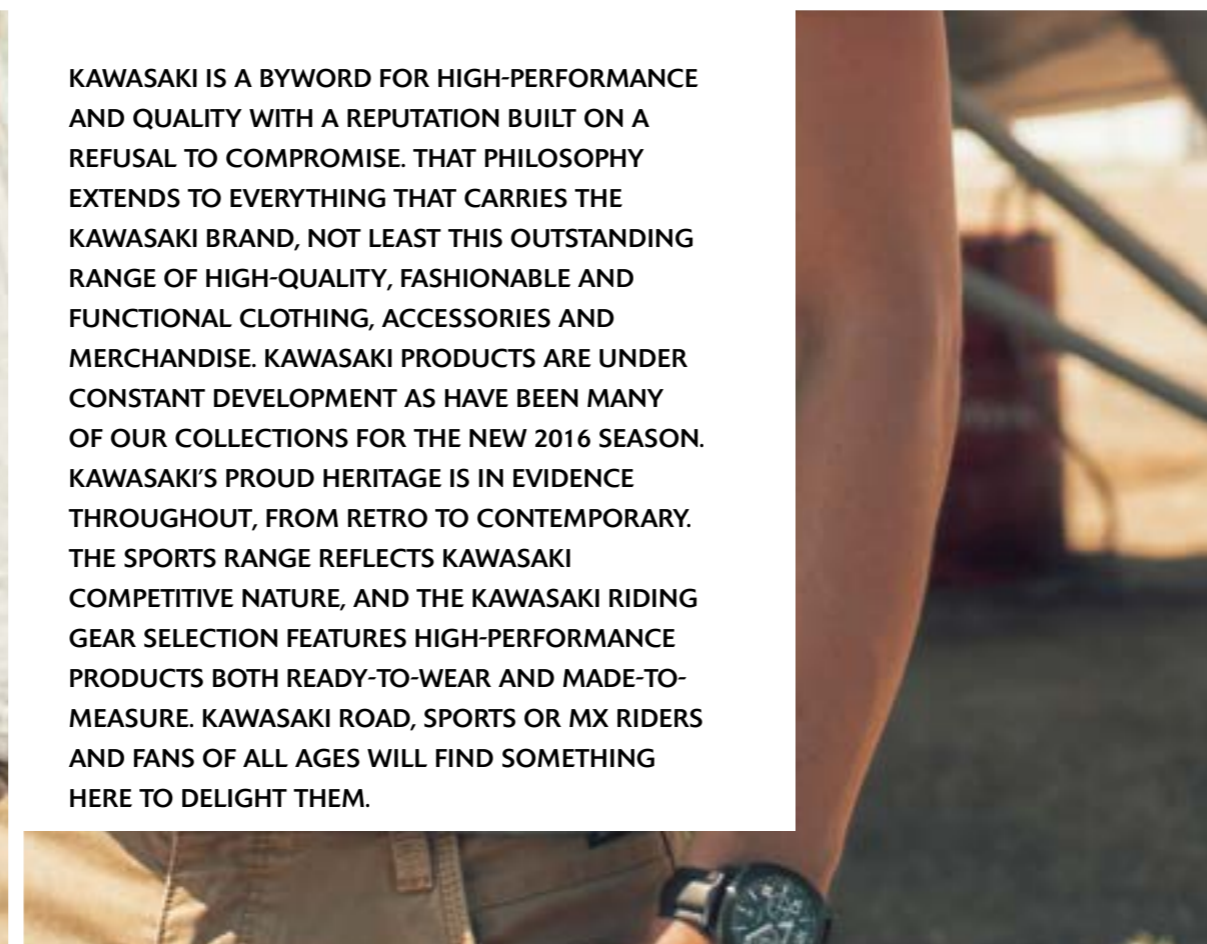


KAWASAKI REPRESENTS A UNIQUE ENGINEERING HERITAGE AND A WEALTH OF TECHNOLOGICAL EXPERTISE COMBINED WITH PASSION, PERFORMANCE AND INDIVIDUALITY.

You can't buy or "invent" heritage, that's why our history of creating iconic machines is the envy of other manufacturers and celebrated with such enthusiasm by loyal Kawasaki riders the world over. Our hard won reputation for manufacturing provocative and distinctive motorcycles creates a positive point of difference in a world of uniformity and sets Kawasaki apart.



GET THE KAWASAKI STYLE



KAWASAKI IS A BYWORD FOR HIGH-PERFORMANCE AND QUALITY WITH A REPUTATION BUILT ON A REFUSAL TO COMPROMISE. THAT PHILOSOPHY EXTENDS TO EVERYTHING THAT CARRIES THE KAWASAKI BRAND, NOT LEAST THIS OUTSTANDING RANGE OF HIGH-QUALITY, FASHIONABLE AND FUNCTIONAL CLOTHING, ACCESSORIES AND MERCHANDISE. KAWASAKI PRODUCTS ARE UNDER CONSTANT DEVELOPMENT AS HAVE BEEN MANY OF OUR COLLECTIONS FOR THE NEW 2016 SEASON. KAWASAKI'S PROUD HERITAGE IS IN EVIDENCE THROUGHOUT, FROM RETRO TO CONTEMPORARY. THE SPORTS RANGE REFLECTS KAWASAKI COMPETITIVE NATURE, AND THE KAWASAKI RIDING GEAR SELECTION FEATURES HIGH-PERFORMANCE PRODUCTS BOTH READY-TO-WEAR AND MADE-TO-MEASURE. KAWASAKI ROAD, SPORTS OR MX RIDERS AND FANS OF ALL AGES WILL FIND SOMETHING HERE TO DELIGHT THEM.

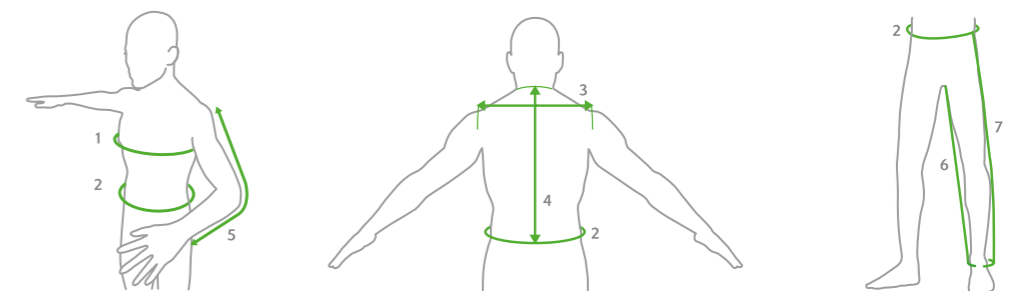
CONTENT

LEISURE RANGE	6-23	SBK REPLICA	52-61
SPORTS RANGE	24-33	TOM SYKES OFFICIAL MERCHANDISE	62-65
KAWASAKI RACING TEAM	34-39	BAGS, WATCHES & SUNGLASSES	66-69
RIDING GEAR	40-47	MERCHANDISE	70-77
TEAM GREEN	48-51	KAWASAKI CUSTOM-MADE GEAR	78-79

CLOTHING

SIZING INFORMATION:

- 1: Horizontally around body at point where chest is widest.
- 2: Waist (measure area where trouser belt is normally worn).
- 3: Horizontally across the back. Top outer edge of left shoulder to top outer edge of right shoulder.
- 4: Base of neck as it joins shoulders vertically to where it would touch trouser belt if worn.
- 5: Between wrist bone and shoulder where arm joins body measuring on the outer part of arm.
- 6: Inside crotch to ankle bone
- 7: Outside waist to ankle bone



MEN

Sizes	XS/S	S/M	M/L	L/XL	XL/2XL	2XL/3XL
Chest circumference	86/90	92/96	98/102	104/108	110/114	118/122
Waist circumference	86/90	94/98	102/106	110/114	118/122	126/130

WOMEN

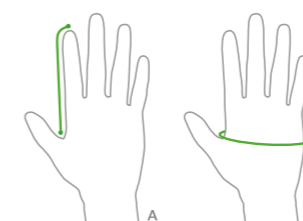
Sizes	2XS/XS	XS/S	S/M	M/L	L/XL
Chest circumference	82/86	88/92	94/98	100/104	106/110
Waist circumference	78/82	86/90	92/96	98/102	104/108

CHILDREN

Sizes	44/56	56/68	68/80	80/92	92/104	104/116	116/140	140/164
Chest circumference	47/52	50/54	54/58	58/62	60/64	64/68	77/81	89/93

RIDING GEAR

Sizes	S	M	L	X L	2XL	3XL
Chest circumference	92	96	100	104	108	112
Waist circumference	85	89	93	97	101	105
Bottom circumference	94	98	102	106	110	114
Shoulder width	44.5	46	47.5	49	50.5	52
Backlength to waist	45.5	46.5	47.5	48.5	49.5	50.5
Sleevelength, bent 90°	60	61	62	63	64	65
Waist to ankle	93	94	95	96	97	98
Crotch-ankle length	74.5	75.5	76.5	77.5	78.5	79.5



GLOVES

SIZING INFORMATION:

- A: From a point at the base of the index finger and thumb to the top of the index finger.
- B: From a point at the base of the index finger and thumb horizontally around entire circumference of hand (palm and back of hand).

Sizes	2XS	XS	S	M	L	XL	2XL	3XL
A	11.5	12	12.5	13	13.5	14	14.5	15
B	18	19	20	21	22	23	24	25

FOR A FULL LIST OF ALL KAWASAKI CLOTHING, MERCHANDISE AND ACCESSORIES GO TO: WWW.KAWASAKI.CO.UK

LEISURE RANGE

MAKE THE MOST OF YOUR RECREATION
AND RELAXATION TIME THE KAWASAKI WAY.
FROM RETRO TO CONTEMPORARY, THERE
IS SOMETHING TO SUIT YOUR STYLE.





AKASHI JACKET

Be snug in this lustrous padded Kawasaki jacket. A white embroidered Kawasaki legend stands out on the left chest while a Kawasaki classic logo adds detail below the rear of the high collar. The central zip has a covering flap to keep the chill out while pouch pockets on the chest and angled pockets at the hips are secured by snap fasteners.

SIZE: XS/S to 2XL/3XL
P/N: 224STM0031 to 224STM0036



H1 JACKET

Kawasaki's high-performance heritage is celebrated in the H1 windproof jacket. The classic Kawasaki logo is discreetly stitched on the left breast while the back boasts a highly detailed embroidered rendering of the late-1960's/early 1970's H1, the formidable 500cc two-stroke triple that cemented Kawasaki's uncompromising sportsbike reputation. A white zipper, piping and ribbed waist and cuffs provide striking contrasting details.

SIZE: XS/S to 2XL/3XL
P/N: 224STM0001 to 224STM0006



1952 SOFTSHELL BODY-WARMER ♀

Modern performance fabrics combine with contemporary style in this fashionable ladies vest. The softshell outer provides highly effective wind protection while the polar fleece inner lining keeps your body heat in and the cold out. A contrasting coloured fleece collar is a cosy addition as are two nylon-zippered handwarmer pockets. Embroidered logos on the collar and breast provide a classy and understated finishing touch.

SIZE: 2XS/XS to L/XL
P/N: 224STM0021 to 224STM0025



1878 SWEATER

Take the edge off colder days with this 100% cotton Majolica blue sweater. Knitted double V-neck and cuff are finished in contrasting grey. A Kawasaki logo is embroidered in subtle darker blue on the left breast and an embossed '1952' aluminium label plate provides the finishing touch.

SIZE: XS/S to 2XL/3XL
P/N: 166STM0011 to 166STM0016



SPEED SWEATSHIRT

This classic cotton sweatshirt in grey makes a bold 'Engineered for Speed' declaration on its right sleeve and has a microinjection Kawasaki 1952 logo on its left breast. Majolica blue contrasting inserts on the sides, sleeves, inner front opening and collar reprise the colour of the sleeve embroidery. Matt-frosted metallic buttons provide the front closure and also secure two patch pockets at the front.

SIZE: XS/S to 2XL/3XL
P/N: 072STM0051 to 072STM0056



1878 SWEATSHIRT ♀

This ladies version of the Est. 1878 Kawasaki sweatshirt is made from 100% cotton, cut to flatter the feminine figure. It comes in optical white with contrasting collar, cuffs and exterior stitching detail in Majolica blue. An embroidered Kawasaki Est. 1878 chest logo is applied in two complementary colours. Matt-frosted metallic buttons secure the front fastening from the waist to the high-rise collar.

SIZE: 2XS/XS to L/XL
P/N: 072STM0061 to 072STM0065



1878 SWEATSHIRT

Putting a contemporary twist on a classic garment, this cotton sweatshirt jacket in Majolica blue combines warmth with practicality and style. Subtle ton sur ton embroidery depicts the Kawasaki logo on the left breast while the right has the Est. 1878 legend. Chunky matt-frosted metallic buttons secure the front of the sweatshirt and the high-rise collar. Two buttoned front patch pockets are a useful addition.

SIZE: XS/S to 2XL/3XL
P/N: 072STM0041 to 072STM0046



SPEED 1952 SWEATSHIRT

This 100% cotton vintage sweatshirt has a '52 fabric patch logo on the front separated by a full-length zip. The 'Engineered for Speed Since 1952' theme is celebrated on the back, enhanced with a Kawasaki embroidered logo. Zipped pockets, a knitted collar and cuffs and faux leather detailing and elbow patches are stand-out details.

SIZE: XS/S to 2XL/3XL
P/N: 072STM0081 to 072STM0086

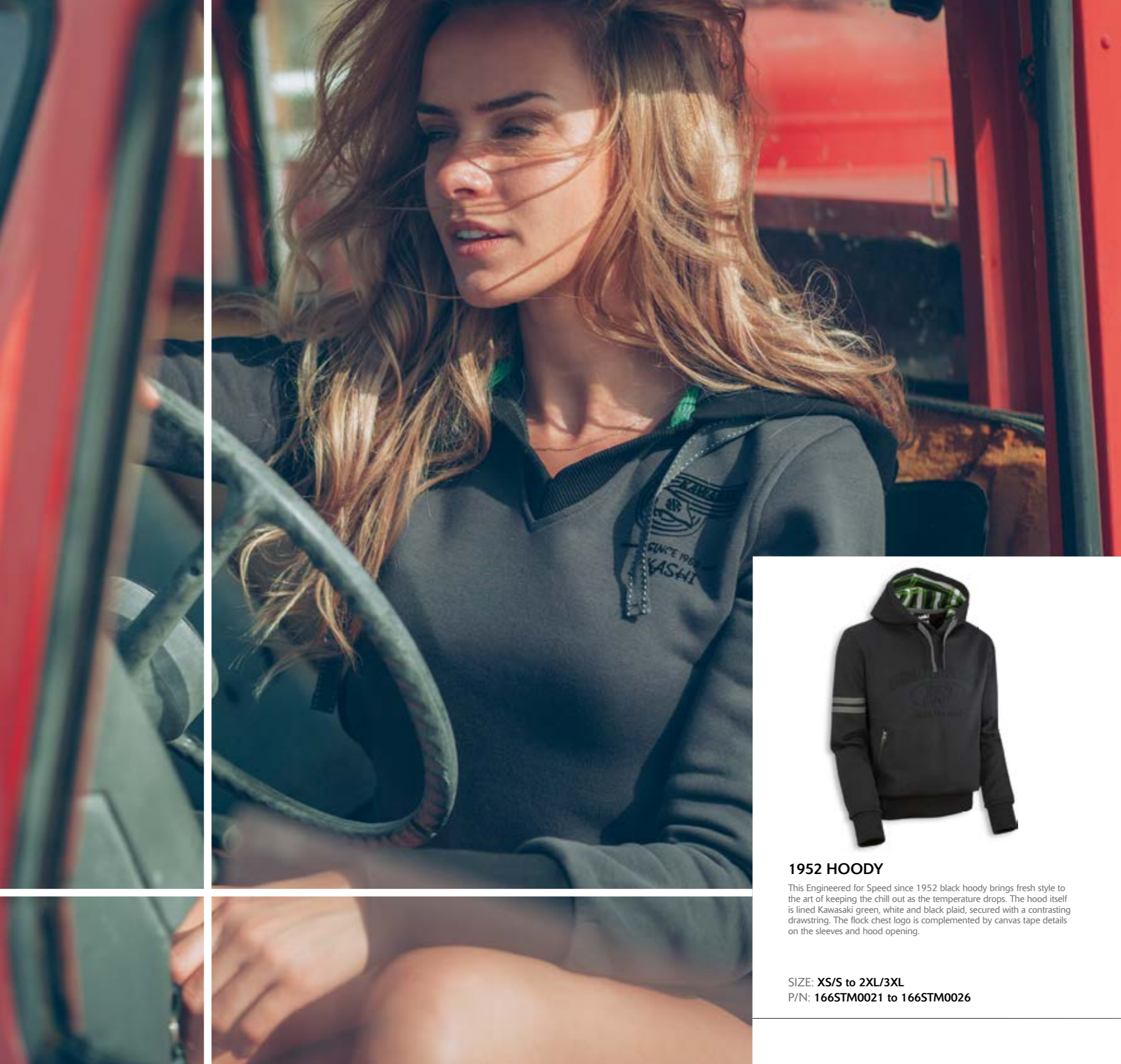


SPEED HOODY

A cosy take on the 'Engineered for Speed Since 1952' theme – a 100% cotton hoody with crossed front hood opening. The chest features an embroidered patch Japanese flag with puffed print writing and '52' represented in a plain-stitch jersey patch. A Kawasaki logo boldly embroidered on the right sleeve provides the finishing touch.

SIZE: XS/S to 2XL/3XL
P/N: 072STM0071 to 072STM0076





AKASHI HOODY

Bold and bright in Kawasaki green, this hoody features the classic kangaroo front pocket and half-zip neck opening. The black embroidery logo on the front of the hoodie evokes Kawasaki's early days as a motorcycle manufacturer. An embroidered Kawasaki logo decorates the right sleeve.

SIZE: XS/S to 2XL/3XL
P/N: 166STM0031 to 166STM0036



1952 HOODY

This Engineered for Speed since 1952 black hoody brings fresh style to the art of keeping the chill out as the temperature drops. The hood itself is lined Kawasaki green, white and black plaid, secured with a contrasting drawstring. The flock chest logo is complemented by canvas tape details on the sleeves and hood opening.

SIZE: XS/S to 2XL/3XL
P/N: 166STM0021 to 166STM0026



AKASHI HOODY ♀

Warmth and style combine in this ladies' V-neck hoody. The anthracite body is complemented by black-ribbing details. Drawstrings at hood and waist have green rubber bead pulls. A classic Kawasaki flock logo decorates the left side of the chest.

SIZE: 2XS/XS to L/XL
P/N: 166STM0041 to 166STM0045



1878 POLO LONG SLEEVES

A polo shirt that celebrates over 125 years of Kawasaki heritage. This cotton piquet long sleeve shirt contrasts navy and dutch blue divided by a diagonal grey stripe. That same grey is used for the collar and cuffs and an embroidered Kawasaki logo on the left breast and Est. 1878 legend on the right sleeve. Classy blue and grey Kawasaki applique tape lines the collar.

SIZE: XS/S to 2XL/3XL
P/N: 139STM0051 to 139STM0056



SPEED POLO LONG SLEEVES

Classic style meets modern casual flair in this long-sleeve polo shirt. A striking embroidered vertical Kawasaki logo adorns the front and the right sleeve bears the Engineered for Speed Since 1952 legend. Both are created in a jersey patch style with plain stitching. An aluminum '1952' label plate provides additional decoration. Subtle striping accentuates the collar and cuffs while the neck opening and inner lunette are blue to contrast the black of the main body.

SIZE: XS/S to 2XL/3XL
P/N: 139STM0061 to 139STM0066



1878 T-SHIRT LONG SLEEVES

This vintage style jersey long sleeve T-shirt commemorates the historic founding of Kawasaki in 1878. A bold distressed screenprinted logo adorns the front of the shirt while a 3D Kawasaki logo provides the detail on the rear. A contrasting neck rib reprises the colour of the distressed screenprinted logo.

SIZE: XS/S to 2XL/3XL
P/N: 177STM0091 to 177STM0096



SPEED T-SHIRT LONG SLEEVES

A navy blue jersey long sleeve T-shirt with bold dutch blue contrasting bands across the chest carrying the 'Engineered for Speed Since 1952' logo in a distinguished mix of flock printing and embroidery. The waist and cuffs feature double-row contrast stitching. A dutch blue Kawasaki logo provides the detail at the back of the neck.

SIZE: XS/S to 2XL/3XL
P/N: 177STM0081 to 177STM0086



1878 POLO LONG SLEEVES ♀

Kawasaki's long, proud heritage and tradition inspired this polo shirt cut for women in black piquet fabric with rich Rumba red body, sleeve and neck opening insets plus details. This long sleeve polo has a rubber embossed 3D Kawasaki logo with a flat printed Est. 1878 legend underneath. The collar has a white-edged red and black Kawasaki applique tape detail.

SIZE: 2XS/XS to L/XL
P/N: 139STM0071 to 139STM0075



SPEED POLO LONG SLEEVES ♀

Celebrate Kawasaki's 60 years of going faster with this long-sleeved women's polo shirt. It carries the 'Engineered for Speed since 1952' legend printed in 3D on the left breast and a discreet Kawasaki logo on the collar. The body is Wind Chime grey while the sleeves are Majolica blue. Grosgrain ribbon adorns the neck opening while an embossed aluminum '1952' date stamp completes the detailing.

SIZE: 2XS/XS to L/XL
P/N: 139STM0081 to 139STM0085



1878 T-SHIRT LONG SLEEVES ♀

This long sleeve jersey T-shirt for women marks the 1878 establishment of Kawasaki. A combination of screen and puff printing commemorate the date on the front of this Majolica blue fitted shirt. The neck opening is finished in contrasting optical white to create a truly eye-catching garment.

SIZE: 2XS/XS to L/XL
P/N: 177STM0111 to 177STM0115



1952 SHIRT LONG SLEEVES

A fresh take on the classic white shirt. A 'Kawasaki 1952' microinjection logo on the chest and a black collar and cuffs provide contrast. Subtle insignia on shoulder epaulettes set the shirt apart from the norm too. Dark-coloured buttons on the front fastening and epaulettes combine with the other details to make a strong style statement.

SIZE: XS/S to 2XL/3XL
P/N: 153STM0041 to 153STM0046



H1 POLO SHORT SLEEVES

The dawn of Kawasaki's high-performance heritage is celebrated in this black polo shirt, featuring the revered 1969 H1 two-stroke triple. This was the bike that established Kawasaki as a major manufacturer of uncompromising street bikes. Two contrasting jersey-style stripes enhance the arms and collar. A canvas side label provides additional decoration.

SIZE: XS/S to 2XL/3XL
P/N: 139STM0131 to 139STM0136



SPEED POLO SHORT SLEEVES

Kawasaki has been engineering for speed since 1952 in pursuit of perfection. This men's grey melange polo has two-tone side inserts and triple-stitch overlock contrasting highlighting. A 3D injection-moulded Kawasaki logo adorns the right breast while the 'Engineered for Speed Since 1952' legend is in distressed screenprint on the back. The neck opening is three-button and the collar is edged in white. An embossed '1952' aluminium label plate is the finishing touch.

SIZE: XS/S to 2XL/3XL
P/N: 139STM0101 to 139STM0106



AKASHI POLO SHORT SLEEVES

Rewind to the roots of Kawasaki with this retro-styled heather grey jersey fabric polo shirt. A classic logo on the left of the chest also marks Akashi City, where Kawasaki magic has been created since 1952. Green ribbed sleeve inserts match the collar and neck opening.

SIZE: XS/S to 2XL/3XL
P/N: 139STM0161 to 139STM0166



1952 POLO SHORT SLEEVES

Celebrate Kawasaki's heritage with this classy polo shirt. Green stripes on shoulders provide subtle contrast with the dark anthracite body. An 'Engineered for Speed Since '52' and Japanese flag design on the right of the chest is complemented by a Kawasaki logo on the left sleeve.

SIZE: XS/S to 2XL/3XL
P/N: 139STM0151 to 139STM0156



1878 POLO SHORT SLEEVES

"Much has changed since Kawasaki opened shop in 1878 but our quality remains a constant. Find it in this men's polo shirt in light blue piquet with grey side inserts and triple-stitch overlock highlighting. A 3D Kawasaki logo adorns the right breast while 'Est. 1878' is depicted in vintage screen print on the back. The three-button neck has a contrasting grey insert and the collar is edged in white.

SIZE: XS/S to 2XL/3XL
P/N: 139STM0091 to 139STM0096



H1 1969 POLO SHORT SLEEVES

A dark grey men's polo shirt in high-quality cotton piquet. It features a plain-stitch jersey patch Kawasaki logo plus a screen print of the legendary 1969 H1 two-stroke triple in candy lime green. The sporty and luxurious look and feel of the shirt are further enhanced by a diamond pattern fabric insert on the arms and inner neck.

SIZE: XS/S to 2XL/3XL
P/N: 139STM0141 to 139STM0146



AKASHI POLO SHORT SLEEVES ♀

Classic Kawasaki style finds bright, contemporary expression in this women's polo shirt in white with Kawasaki green ribs on the short sleeves. Further contrast comes from custom black buttons, detail stitching to the waist and a black flock classic Kawasaki logo.

SIZE: 2XS/XS to L/XL
P/N: 139STM0181 to 139STM0185



1952 POLO SHORT SLEEVES ♀

This women's anthracite grey jersey polo shirt boasts a host of stylish details. Tassels on cuffs are secured with Kawasaki green buttons, the same shade as the lower one on the neck opening. A black flock classic Kawasaki logo provides subtle contrast with the main body colour. The finishing touch is a 'Japanese Soul, European Design' patch label on the hip.

SIZE: 2XS/XS to L/XL
P/N: 139STM0171 to 139STM0175



1878 T-SHIRT SHORT SLEEVES

The quality and detail that have distinguished Kawasaki products for over 125 years can be found in this vintage style Est. 1878 high-quality stretch cotton T-shirt. Distressed collar and seams give a vintage vibe as do the charcoal screenprint and deep, distinctive Kawasaki embroidery on the reverse.

SIZE: XS/S to 2XL/3XL
P/N: 177STM0051 to 177STM0056



KAWASAKI SUGOMI T-SHIRT SHORT SLEEVES

Sugomi – an aura of greatness, captured in this 100% cotton grey T-shirt. A black Sugomi logo with a red embroidered outline and the legend "instinct has a sign" make a bold statement on the front of the T-shirt. Black Kawasaki logo on the left sleeve.

SIZE: XS/S to 2XL/3XL
P/N: 177SPM0681 TO 177SPM0687



1878 T-SHIRT SHORT SLEEVES ♀

Clever embellishment brings extra style to this women's black V-neck T-shirt. Black screenprint celebrates the year of Kawasaki's formation alongside a white puffed-print company logo on the chest. Folded sleeve hems are held in place with custom green buttons. A 'Japanese Soul, European Design' patch label on the hip is the finishing touch.

SIZE: 2XS/XS to L/XL
P/N: 177STM0221 to 177STM0225



1952 T-SHIRT SHORT SLEEVES

Subtle detailing is the theme for this round-neck cotton T-shirt but the result is still unmistakably Kawasaki. Double-cuff sleeves and waist give a clever contrast to the black body. A flock 'Engineered for Speed Since 1952' legend and Kawasaki logo provide 3D detail on the front.

SIZE: XS/S to 2XL/3XL
P/N: 177STM0211 to 177STM0216



AKASHI T-SHIRT SHORT SLEEVES

Kawasaki fans from every era will delight in the retro style of this lime-green V-neck cotton T-shirt. A classic Kawasaki flock logo tops the legend 'Akashi', where our bikes have been created since 1952. A contrasting dark stripe lines the V-neck opening.

SIZE: XS/S to 2XL/3XL
P/N: 177STM0191 to 177STM0196



RETRO SPEED T-SHIRT SHORT SLEEVES

'Japanese Soul, European Design', as the patch tag on the hip states. Kawasaki have been engineering for speed since 1952, a fact celebrated in this white round-neck T-shirt. A distressed screenprint legend celebrating this heritage boldly adorns the chest. Contrasting sleeve flashes and neck lining complement the design.

SIZE: XS/S to 2XL/3XL
P/N: 177STM0201 to 177STM0206



SPEED T-SHIRT SHORT SLEEVES

Kawasaki are masters at combining the very best elements in all they do. High quality embroidery and subtly contrasting screenprinting combine in this high-quality stretch cotton T-shirt in celebration of Kawasaki's 'Engineered for Speed Since 1952' theme. An embossed aluminium '1952' label plate provides the finishing touch.

SIZE: XS/S to 2XL/3XL
P/N: 177STM0061 to 177STM0066



W1 T-SHIRT SHORT SLEEVES

In 2015 it will be 50 years since the Kawasaki W1 650 made its debut. This high-quality stretch cotton T-shirt is a tribute to that landmark bike. Light stone washing give the shirt a vintage vibe. The W1 is printed in four colours with broccatello embroidery detailing. A 'Japanese Soul, European Design' canvas label at the hip is the finishing touch.

SIZE: XS/S to 2XL/3XL
P/N: 177STM0171 to 177STM0176



SPEED T-SHIRT SHORT SLEEVES

Kawasaki's 'Engineered for Speed Since 1952' theme is celebrated on this fabulous Majolica blue jersey T-shirt. Grey jersey double bands on the sleeves provide the contrast and match the high-quality flock-printed logo on the front and discreet Kawasaki motif on the back.

SIZE: XS/S to 2XL/3XL
P/N: 177STM0101 to 177STM0106



SPEED T-SHIRT LONG NECK

This drawstring long-necked grey melange T-shirt boasts a distressed vintage screen-printed 'Engineered for Speed Since 1952' logo in blue across the chest, topped off with a contrasting grey 3D Kawasaki device. An embossed aluminium '1952' label plate provides the finishing touch.

SIZE: XS/S to 2XL/3XL
P/N: 177STM0121 to 177STM0126



1878 T-SHIRT SHORT SLEEVES

This five-button V-neck jersey T-shirt is adorned with vintage distressed screenprinted logos marking the 1878 establishment of Kawasaki. The primary colour is bijou blue while the sleeve trim, logos and buttons are a contrasting grey. The contemporary style of the T-shirt combines perfectly with the retro vibe of the 1878 logo.

SIZE: XS/S to 2XL/3XL
P/N: 177STM0131 to 177STM0136



1952 T-SHIRT SHORT SLEEVES

'52' is a big number in Kawasaki history. We've been engineering for speed since 1952, a fact celebrated in this V-neck jersey T-shirt, adorned with a '52 fabric patch and embroidered green edges. There's a classic Kawasaki flock print logo on the breast while a 'Japanese Soul, European Design' canvas label at the hip completes the detailing.

SIZE: XS/S to 2XL/3XL
P/N: 177STM0151 to 177STM0156



KAWASAKI JAPANESE SOUL T-SHIRT SHORT SLEEVES

Kawasaki's long heritage is recognised in this high-quality green V-neck T-shirt bearing the legends 'Kawasaki' and 'Japanese Soul Since 1878'. An invitation to wear the vintage screenprinted shirt with pride adorns the inside of the back of the neck. A 'Japanese Soul, European Design' canvas label at the hip provides the finishing touch.

SIZE: XS/S to 2XL/3XL
P/N: 177STM0161 to 177STM0166



SPEED T-SHIRT SHORT SLEEVES

Just like the best Kawasaki motorcycles, this high-quality stretch cotton T-shirt combines the best of all worlds. Kawasaki's 'Engineered for Speed Since 1952' theme finds expression through puffed printing, patchwork and screenprinting. An embroidered vintage Kawasaki logo on the arm provides the finishing touch.

SIZE: XS/S to 2XL/3XL
P/N: 177STM0181 to 177STM0186



1878 BERMUDA

Keep cool in comfort and style on warmer days with these 100% canvas cotton bermuda shorts. Plentiful pouch pockets with hidden snap buttons on the sides and back let you carry your essentials. The waist can be secured by the integral drawstring and belt loops are also provided. Embroidered 'Kawasaki' and 'Est. 1878' logos on front and rear pocket flaps and an aluminium '1878' label plate give this sporty garment a retro touch.

SIZE: XS/S to 2XL/3XL
P/N: 132STM0021 to 132STM0026



KAWASAKI SCARF

Keep winter at bay with this 100% acrylic fringed scarf, detailed with high-quality ton sur ton Kawasaki embroidery.

P/N: 014STM0001



1878 SNEAKERS

These Italian-made sneakers celebrate the 1878 establishment of Kawasaki in navy and dutch blue, black and white. The 1878 logo is embroidered in white on the side of the shoe. A Japanese flag provides an arresting finishing touch on the heel. Supplied with a pair each of white and black laces.

SIZE: 36 to 45
P/N: 236STM0000 to 236STM0009



KAWASAKI LEATHER BELT

A finishing touch of the highest possible class. A genuine Italian leather belt with a distinctive Kawasaki logo engraved buckle.

SIZE: 105 cm to 125 cm
P/N: 015STM0015 to 015STM0019



KAWASAKI SUEDE BELT ♀

Italian suede provides the material for this women's pink belt. A nicely sculpted buckle features an engraved Kawasaki logo.

SIZE: 90 cm to 110 cm
P/N: 015STM0020 to 015STM0024



KAWASAKI BELT

Accessorise and customise your outfit with this majolica blue eva belt, the perfect complement for your outfit. Kawasaki logo moulded into the buckle in black.

SIZE: 110 cm to 120 cm
P/N: 015STM0012 to 015STM0014



SPORTS RANGE



SPORTS RAIN JACKET

Shrug off summer showers with this lightweight nylon rain jacket. It folds down into an easily carried nylon pack making the jacket easy to store conveniently. Black with Kawasaki green detailing at the front fastening, collar and zippered side pockets, the rain pack jacket also features prominent Kawasaki logos printed in white front and back. A rubberised Kawasaki zipper pull opens and closes the rain jacket.

SIZE: XS/S to 3XL/4XL
P/N: 104SPM0071 to 104SPM0077



SPORTS SUMMER JACKET

Sports summer jacket with inner mesh for extra comfort and to help you keep you cool. Embroidered white Kawasaki logos adorn the black polyester jacket body, a large one on the back and a smaller one on the left breast. Kawasaki green lines the collar and extends to the outer edge and also decorates the main zipper opening and zippered side pockets.

SIZE: XS/S to 3XL/4XL
P/N: 104SPM0061 to 104SPM0067



SPORTS SOFTSHELL JACKET

This all-weather softshell jacket with polar fleece inner lining will protect you against the elements. White Kawasaki logos adorn the black body, a large stitched-edge patch one on the back and a smaller embroidered legend on the left breast. Kawasaki green piping on the body, sleeves and inside the collar and neck flap provide contrast. Windproof zippers with customised pullers on the collar, wrists and breast pocket form the final finishing touch.

SIZE: XS/S to 3XL/4XL
P/N: 104SPM0081 to 104SPM0087



SPORTS HOODED SWEATSHIRT

Sweatshirt meets hoody in the in this versatile 100% cotton sports garment. Embroidered white Kawasaki logos adorn the black body of the sweatshirt, a large one on the back and a smaller one on the left breast. Kawasaki green detailing enhances the nylon zipper opening, cuffs, and ribbed waist and there are stitched elbow patch outlines on the sleeves. The hood drawstrings are Kawasaki green too, finished off with customised metal tips. Contrasting Kawasaki print lines the hood.

SIZE: XS/S to 3XL/4XL
P/N: 166SPM0161 to 166SPM0167

KAWASAKI FANS WHO ENJOY AN ACTIVE LIFESTYLE WILL BE READY FOR ACTION WITH THE KAWASAKI SPORTS RANGE, DESIGNED AND MANUFACTURED TO OUR EXACTING STANDARDS.



SPORTS SWEATSHIRT

A 100% cotton sports sweatshirt with Kawasaki green inner collar area with outer stripes on waist, cuffs, front zipper and side pockets. White Kawasaki logos adorn the black sweatshirt body, a large stitched-edge patch one on the back and a smaller embroidered legend on the left breast. A Kawasaki zipper puller provides a final finishing touch.

SIZE: XS/S to 3XL/4XL

P/N: 166SPM0141 to 166SPM0147



SPORTS HOODED SWEATSHIRT ♀

Women's version of the versatile 100% cotton Kawasaki sports hooded sweatshirt. Embroidered white Kawasaki logos adorn the tailored black body, a large one on the back and a smaller one on the left breast. Kawasaki green detailing enhances the nylon zipper opening, cuffs, waist and pockets. The hood drawstrings are Kawasaki green too, finished off with customised metal tips. Contrasting Kawasaki print lines the hood.

SIZE: 2XS/XS to 2XL/3XL

P/N: 166SPM0171 to 166SPM0177

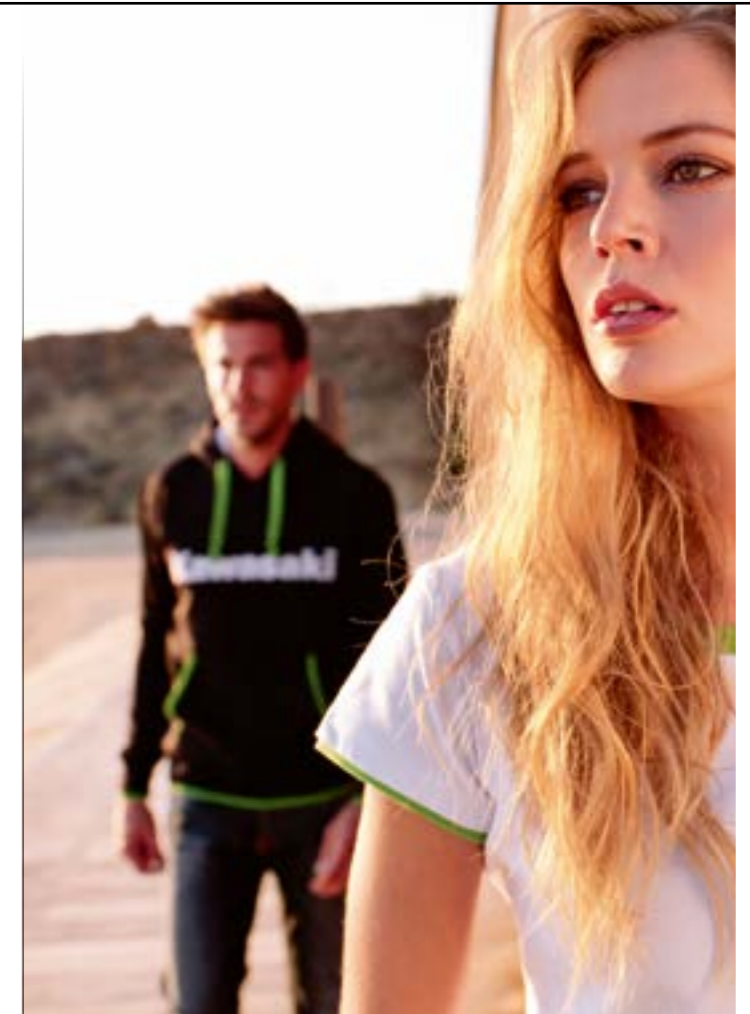


SPORTS HOODY

Find a cosy companion in this 100% cotton hoody. Large embroidered white Kawasaki logos stand out against the black body of the hoody. There's Kawasaki green detailing on the cuffs, ribbed waist and kangaroo pouch pocket, and the hood drawstrings are the same trademark shade, finished off with customised metal tips. Contrasting Kawasaki print lines the hood.

SIZE: XS/S to 3XL/4XL

P/N: 166SPM0151 to 166SPM0157



SPORTS HOODY KIDS

Junior version of the 100% cotton hoody. Large embroidered white Kawasaki logos stand out against the black body of the hoody. There's Kawasaki green detailing on the cuffs, ribbed waist, kangaroo pouch pocket. Contrasting Kawasaki print lines the hood.

SIZE: 44/56 to 140/164

P/N: 166SPM0181 to 166SPM0188



SPORTS SHIRT LONG SLEEVES ♀

This long-sleeve women's fitted white shirt has lime green piping on the sides, collar and edges of the buttoned cuffs. Iridescent green buttons on the front opening and cuffs are embossed with the Kawasaki logo. The front opening is lined in contrasting green. There are distinctive black embroidered Kawasaki logos front and rear, a large stitched-edge patch one on the back and a smaller embroidered legend on the left breast. White-on-black Kawasaki engraved velvet tape lines the neck area.

SIZE: 2XS/XS to XL/2XL

P/N: 153SPM0121 to 153SPM0126



SPORTS SHIRT LONG SLEEVES

This long-sleeve black shirt features many stunning details. Lime green piping accentuates the sides, collar and edges of the buttoned cuffs. Black buttons on the front opening and cuffs are embossed with the Kawasaki logo. The front opening is lined in contrasting green. There are striking white embroidered Kawasaki logos front and rear, a large stitched-edge patch one on the back and a smaller embroidered legend on the left breast. White-on-black Kawasaki engraved velvet tape lines the neck area and there's a useful slit pocket on the right breast.

SIZE: XS/S to 3XL/4XL

P/N: 153SPM0111 to 153SPM0117



SPORTS POLO LONG SLEEVES ♀

Black cotton long-sleeved women's polo shirt in pique with tailored side slits and breathable inserts on shoulders. Kawasaki green contrasting detail at wrists, collars, shoulders and six-button neck opening. There are embroidered Kawasaki logos front and rear, a large stitched-edge patch one on the back and a smaller embroidered legend on the left breast. Black-on-green Kawasaki embossed tape lines the inner collar.

SIZE: 2XS/XS to XL/2XL

P/N: 139SPM0161 to 139SPM0166



SPORTS POLO LONG SLEEVES

Cotton piquet long-sleeve polo shirt with Kawasaki green embossed buttons, inner neck opening, collar rib stripe, side slits, elasticated wrists and stitched elbow area. These features complement striking embroidered Kawasaki logos front and rear, a large stitched-edge patch one on the back and a smaller embroidered legend on the left breast. Kawasaki embossed tape lines the inner collar.

SIZE: XS/S to 3XL/4XL

P/N: 139SPM0121 to 139SPM0127



SPORTS POLO LONG SLEEVES KIDS

A version of the long-sleeve black polo shirt for juniors. Kawasaki green embossed buttons, inner neck opening, collar rib stripe, side slits, elasticated wrists and stitched elbow area. These features complement striking embroidered Kawasaki logos front and rear, a large stitched-edge patch one on the back and a smaller embroidered legend on the left breast. Kawasaki embossed tape lines the inner collar.

SIZE: 44/56 to 140/164

P/N: 139SPM0181 to 139SPM0188



SPORTS POLO SHORT SLEEVES KIDS

Junior version of the cotton piquet polo shirt with Kawasaki green embossed buttons, inner neck opening, collar rib stripe and sleeve edges. These features complement striking embroidered Kawasaki logos front and rear, a large stitched-edge patch one on the back and a smaller embroidered legend on the left breast. Kawasaki embossed tape lines the inner collar.

SIZE: 44/56 to 140/164

P/N: 139SPM0171 to 139SPM0178



SPORTS SHIRT SHORT SLEEVES ♀

This short-sleeve women's fitted black shirt has lime green trim contrasting the sides, collar and edges of the sleeves. The front opening is also lined in contrasting green. Black buttons on the front opening are embossed with the Kawasaki logo. There are striking black embroidered Kawasaki logos front and rear, a large stitched-edge patch one on the back and a smaller embroidered legend on the left chest. White-on-black Kawasaki engraved velvet tape finishes off the inside of the collar area.

SIZE: 2XS/XS to XL/2XL

P/N: 153SPM0141 to 153SPM0146



SPORTS POLO SHORT SLEEVES

This black cotton piquet polo shirt uses Kawasaki green detailing to stunning effect. From the Kawasaki engraved velvet tape inside the collar area to the side piping and neck opening, our trademark shade makes this shirt unmistakably Kawasaki. A 10 cm embroidered logo features on the front and there is a large stitched-edge patch Kawasaki legend on the rear.

SIZE: XS/S to 3XL/4XL

P/N: 139SPM0131 to 139SPM0137



SPORTS SHIRT SHORT SLEEVES

This short-sleeve black shirt features many stunning details. Lime green piping accentuates the sides, collar and edges of the sleeves. Black buttons on the front opening are embossed with the Kawasaki logo. The front opening is lined in contrasting green. There are striking white embroidered Kawasaki logos front and rear, a large stitched-edge patch one on the back and a smaller embroidered legend on the left breast. White-on-black Kawasaki engraved velvet tape lines the neck area and there's a useful slit pocket on the right breast.

SIZE: XS/S to 3XL/4XL

P/N: 153SPM0131 to 153SPM0137





SPORTS POLO SHORT SLEEVES ♀

Women's black fitted short-sleeve polo in cotton/elastan jersey. Four lime-green Kawasaki-embossed buttons adorn a plunging neck opening. That and the collar rib stripe and elastic arm openings are also green. There are striking white embroidered Kawasaki logos front and rear, a large stitched-edge patch one on the back and a smaller embroidered legend on the left breast. Black-on-green Kawasaki embossed tape lines the inner collar.

SIZE: 2XS/XS to XL/2XL
P/N: 139SPM0151 to 139SPM0156



SPORTS POLO SHORT SLEEVES ♀

Women's white fitted short-sleeve polo in cotton/elastan jersey. Four lime-green Kawasaki-embossed buttons adorn a plunging neck opening. That and the collar rib stripe and elastic arm openings are also green. There are striking black embroidered Kawasaki logos front and rear, a large stitched-edge patch one on the back and a smaller embroidered legend on the left breast. Black-on-green Kawasaki embossed tape lines the inner collar.

SIZE: 2XS/XS to XL/2XL
P/N: 139SPM0141 to 139SPM0146



SPORTS T-SHIRT SHORT SLEEVES ♀

Women's cotton/elastan jersey white fitted T-shirt with 3D-printed Kawasaki logos; small and discreet at the front and large across the back. Kawasaki green striping around the neck and sleeve openings is repeated at the waist. White-on-black Kawasaki-embossed tape lines the neck area.

SIZE: 2XS/XS to XL/2XL
P/N: 177SPM0611 to 177SPM0616



SPORTS DRESS ♀

This jersey cotton/elastan dress offers comfort and sporty style for warm summer days. Kawasaki green stripes accentuate the ribbed collar and elastic sleeve openings. Four lime-green Kawasaki-embossed buttons close the neck opening, which is also lined in green. There are striking black embroidered Kawasaki logos front and rear, a large stitched-edge patch one on the back and a smaller embroidered legend on the left breast. White-on-black Kawasaki engraved velvet tape lines the neck area. Length 98 cm, small/medium.

SIZE: 2XS/XS to XL/2XL
P/N: 139SPM0191 to 139SPM0196



SPORTS T-SHIRT SHORT SLEEVES KIDS

Junior 100% cotton jersey black T-shirt with striking 3D-printed Kawasaki logos front and rear in white. Kawasaki green striping around the neck and sleeve openings is further accentuated by double-width piping at the waist. Black-on-white Kawasaki embossed tape lines the neck area.

SIZE: 44/56 to 140/164
P/N: 177SPM0621 to 177SPM0628



SPORTS T-SHIRT SHORT SLEEVES

Black jersey T-shirt with massive 31 cm 3D-printed Kawasaki logos front and rear in white. Kawasaki green striping around the neck and sleeve openings is further accentuated by double-width piping at the waist. Black-on-white Kawasaki embossed tape lines the neck area.

SIZE: XS/S to 3XL/4XL
P/N: 177SPM0601 to 177SPM0607



SPORTS BERMUDA

Canvas bermuda shorts help you keep you "Kawasaki cool" as the temperature rises. Useful, deep flap pockets on thighs with Kawasaki logo embroidering on the right side. Heavy duty 100% cotton for durability.

SIZE: XS/S to 3XL/4XL
P/N: 132SPM0030 to 132SPM0036



SPORTS PANTS

Heavy-duty cotton canvas pants are durable and hard-wearing. They feature hidden snap-button pockets on the sides of the legs and back. You'll know they're from Kawasaki by the high quality embroidered logos on the pockets and Kawasaki green button on the waistband.

SIZE: XS/S to 3XL/4XL
P/N: 132SPM0020 to 132SPM0026



SPORTS SOCKS

Short socks in black manufactured from materials carefully selected for the best performance. Made from 80% cotton, 15% polyamide and 5% elastan, with cotton footbed for extra comfort.

SIZE: 31/34 to 43/46
P/N: 160SPM0017 to 160SPM0020



SPORTS SOCKS

The perfect complement for your Kawasaki riding boots or casual footwear. Kawasaki long socks in white made from 80% cotton, 15% polyamide and 5% elastan, with cotton footbed for extra comfort.

SIZE: 31/34 to 43/46
P/N: 160SPM0005 to 160SPM0008



SPORTS BEANIE

A knitted woollen beanie hat in black with a lime-green peak and embroidered Kawasaki logo in white. Not only warm but stylish too. Stand out in any crowd.

SIZE: Universal
P/N: 014SPM0015



SPORTS BELT

Genuine Italian leather provides a classic material for this belt while Kawasaki embossing adds style and class. Closure is by high-quality metal buckle.

SIZE: 105 cm to 125 cm
P/N: 015SPM0030 to 015SPM0034



3/4 SPORTS SOCKS

Clever composition makes these the ultimate sports socks. Kawasaki long socks in black made from 80% cotton, 15% polyamide and 5% elastan, with cotton footbed for extra comfort.

SIZE: 31/34 to 43/46
P/N: 160SPM0009 to 160SPM0012



SPORTS SOCKS

Using the same materials as the Kawasaki long socks, these white anklelength version are made from 80% cotton, 15% polyamide and 5% elastan, with cotton footbed for extra comfort.

SIZE: 31/34 to 43/46
P/N: 160SPM0013 to 160SPM0016



SPORTS BELT LUXURIOUS

Luxurious genuine Italian leather belt securely fastened with a distinctive and striking metal plate style buckle.

SIZE: 105 cm to 125 cm
P/N: 015SPM0035 to 015SPM0039





KRT HOODY

Keep the chill out but stay looking cool in this Kawasaki Racing Team hoody. This men's zip-front fleece hoody features a knitted waistband and cuffs with a draw cord to pull the hood tight. Already recognisable by its Kawasaki Racing Team colours, logos on the left breast and back complete the effect.

SIZE: XS/S to 3XL/4XL
P/N: 166SPM0311 to 166SPM0317

KAWASAKI RACING TEAM

SHOW THE WORKS RIDERS YOU'RE ON THEIR SIDE WHEREVER YOU GO WITH THE KAWASAKI RACING TEAM RANGE OF CLOTHING.



KRT JACKET

When the breeze is blowing, zip up this wind and showerproof Kawasaki Racing Team paddock jacket. Pull the full-length zip to the top and the round collar offers additional wind-chill protection. Kawasaki Racing Team printed logos feature front and rear.

SIZE: XS/S to 3XL/4XL
P/N: 224SPM0071 to 224SPM0077



KRT SWEATSHIRT

Sporty styling for bike sport fans with this Kawasaki Racing Team men's black fleece. Mesh panels on sides and shoulders edged in lime-green striping give this fleece an active design. A full-length zip goes to the top of the high collar for when the temperature drops.

SIZE: XS/S to 3XL/4XL
P/N: 166SPM0321 to 166SPM0327



KRT TECHNICAL T-SHIRT SHORT SLEEVES

For looks as sporty as they are stylish, this men's Kawasaki Racing Team T-shirt has mesh panels at the sides and sleeves. These are bordered by stripes in Kawasaki green. A large Kawasaki Racing Team logo features on the front and there's a smaller one on the back.

SIZE: XS/S to 3XL/4XL
P/N: 177SPM0761 to 177SPM0767



KRT T-SHIRT SHORT SLEEVES

Join the squad in a Kawasaki Racing Team T-shirt. Geometric shapes and stripes in our trademark green make for a shirt as bold as the riders who ride Kawasaki. Just to emphasise the point, white Kawasaki Racing Team logos adorn the shirt front and rear.

SIZE: XS/S to 3XL/4XL
P/N: 177SPM0751 to 177SPM0757



KRT TANK TOP ♀

Female fans can show they are Kawasaki Racing Team followers in this flattering tank top. Cool and comfortable, it gets its styling edge from Kawasaki lime-green stripes accentuating the line of the body. The Kawasaki Racing Team logo is prominent front and back.

SIZE: 2XS/XS to XL/2XL
P/N: 177SPM0771 to 177SPM0776



KRT T-SHIRT KIDS SHORT SLEEVES

Kawasaki Racing Team has something for its junior fans with this kids' T-shirt. Made from 100% cotton, the black shirt is just like dad's with its Kawasaki Racing Team logos front and back. KRT woven tape in the neck provides a finishing touch.

SIZE: 44/56 to 140/164
P/N: 177SPM0781 to 177SPM0788



KRT BEANIE

Here's a fresh take on the beanie hat. Horizontal lime-green lines highlight the headband of the black beanie together with a high-quality white embroidered Kawasaki Racing Team logo.

SIZE: Universal
P/N: 023SPM0024



KRT HOUSE SHOES KIDS

Soft, comfortable and warm house shoes for junior fans in lime green and proudly sporting the Kawasaki Racing Team logo.

SIZE: 25/26 to 31/32
P/N: 237SPM0064 to 237SPM0067



KRT CAP

Get a head start everywhere with this Kawasaki Racing Team cap with its lime-green mesh fabric panels. Embroidered Kawasaki Racing Team logos are stand-out features; white at the front and black at the back.

SIZE: Universal
P/N: 023SPM0023



KRT BALACLAVA

As well as being versatile this most useful of garments looks good too, printed with multiple distinctive Kawasaki Racing Team logos. Wear it your way – balaclava, hat, headband or neckwarmer.

SIZE: Universal
P/N: 014SPM0016



KRT BATHROBE ADULT

Soft, warm and comfortable, this Kawasaki Racing Team robe offers a touch of luxury. Lime-green is the dominant colour with Kawasaki Racing Team logos and wraparound belt in black. Perfect for bathtime, bedtime or just lounging around.

SIZE: Universal
P/N: 177SPM0518



KRT ROMPER

Kawasaki Racing Team gives its smallest fans a perfect start in this cotton romper suit. Lime-green striping at neck, sleeves and legs set a familiar theme completed by a black Kawasaki Racing Team logo printed on the front.

SIZE: 56 to 92
P/N: 177SPM0791 to 177SPM0794

RIDING GEAR



KAWASAKI OWNERS DESERVE THE VERY BEST IN RIDING APPAREL TO GO WITH THEIR CHOICE OF MOTORCYCLE, FROM OFF-THE-PEG TO MADE-TO-MEASURE.



KAWASAKI RACER LEATHERS

- Cow leather (1.2 mm - 1.3 mm) or Kangaroo leather (1.0 mm - 1.1 mm)
- G-nforced™ stretch panels
- CE EN 1621-1 protection inserts on shoulders, elbows, knee
- Additional foam protection on legs and body
- Elasticated leather panels on shoulders, back and knees

Also check [Kawasaki Custom-Made Gear page 78-79](#).

KAWASAKI RAPID LEATHERS

- Cow leather (1.2 mm - 1.3 mm) or Kangaroo leather (1.0 mm - 1.1 mm)
- Dynamic parts
- CE EN 1621-1 protector on shoulders, elbows, knees
- Additional foam protection on legs and body
- Elastic insert on shoulders, back and knees

Also check [Kawasaki Custom-Made Gear page 78-79](#).

ASPHALT LEATHER JACKET

Designed and manufactured in Italy, the Asphalt jacket brings a vintage twist with its retro decorative touches of old school Kawasaki logos on the sleeves and a Japanese flag on the chest pocket. Key protective features include 1.2 mm-1.3 mm premium cowhide construction and CE-approved protectors on shoulders and elbows. There is also a pocket for an optional back protector. A removable thermal inner lining offers seasonal versatility. Elasticated leather shoulder inserts, an adjustable waist and a sanitized inner lining ensure your comfort. Three inside pockets, two outside pockets and a rear zip to connect the jacket to your trousers are additional practical touches.

SIZE: **S to 3XL**

P/N: **104RGM0322 to 104RGM0327**

ASPHALT JACKET ♀

The stylish Asphalt ladies jacket combines vintage flair with modern protection. Out Italian designers have decorated the black vintage leather jacket with a classic Kawasaki logo for full retro effect. Key protective features include 1.2 mm-1.3 mm premium cowhide construction and CE-approved protectors on shoulders and elbows. There is also a pocket for an optional back protector. A thermal inner lining can be removed in warmer weather. Elasticated leather shoulder inserts, an adjustable waist and a sanitized inner lining ensure comfort and fit. There are inside pockets, two outside pockets and a rear zip to connect the jacket to your trousers.

SIZE: **XS to XL**

P/N: **104RGM0341 to 104RGM0345**



NINJA LEATHER JACKET

Italian design brings style and flair to the Kawasaki Ninja leather jacket. Premium cowhide leather construction guarantees optimum protection and riding comfort. This black, green and grey jacket features white Ninja logos on the chest and rear hump plus bold Kawasaki emblems on the sleeves. Key protective features include hide thickness of 1.2 mm - 1.3 mm and CE-approved protectors on shoulders and elbows. There are also external shoulder protectors and a pocket for an optional back protector. Elasticated leather shoulder inserts, an adjustable waist, dynamic elastic inserts and a sanitized inner lining ensure your comfort. An aerodynamic hump, an inside pocket and a rear zip to connect the jacket to your trousers are additional practical touches.

SIZE: **S to 3XL**
P/N: **104RGM0302 to 104RGM0307**



KAWASAKI LEATHER JACKET

We've brought Italian class and style to this black leather jacket with black reflective Kawasaki logos front and back. Premium cowhide leather was specified for optimal safety and riding comfort: The leather's thickness is a sturdy 1.2 mm-1.3 mm and there are CE-approved protectors on shoulders and elbows, and there's also a pocket for an optional back protector. A removable thermal inner lining offers seasonal versatility. Elasticated leather shoulder inserts, an adjustable waist and a sanitized inner lining ensure your comfort. Three inside pockets, two outside pockets and a rear zip to connect the jacket to your trousers are additional practical touches.

SIZE: **S to 3XL**
P/N: **104RGM0312 to 104RGM0317**



VENTOUX TEXTILE JACKET

Kawasaki teamed up with motorcycle clothing specialist Bering to create our ultimate weather jacket, the Ventoux. With the combined know-how of Kawasaki and Bering, this collaboration assures you of the highest performance motorcycling garment, regardless of the elements. The Ventoux jacket's innovative construction boasts many key features, including a waterproof membrane and breathable, warm lining - plus a ventilation system and CE-approved protectors at key areas such as elbows and back. The Ventoux is the ultimate multi-tasker, ready for every challenge.

SIZE: **S to 3XL**
P/N: **104RGM0212 to 104RGM0217**



NINJA TEXTILE JACKET

Be warm and be seen in the Kawasaki Ninja winter waterproof textile jacket. Predominantly black with lime-green flashes and reflective stripes, the Ninja is an eye-catching garment for the colder and wetter months. Kawasaki logos adorn the cuffs. The jacket features a warm inner lining and there's a useful hidden pocket. A high snap-fastened collar helps to keep the wind out and the sleeves are adjustable at the biceps. Removable CE-approved protectors on the elbow and shoulders provide impact protection.

SIZE: **S to 3XL**
P/N: **104RGM0252 to 104RGM0257**



Z LEATHER JACKET ♂/♀

This newly created jacket is specially designed and made in Italy for Kawasaki Z riders. Premium cowhide leather, CE-approved protectors and reflective charcoal logos combine to offer style and safety. Kawasaki developed the unique candy lime green leather and new silicon inserts especially for the Z leather jacket.

♂ SIZE: **S to 3XL**
P/N: **104RGM0282 to 104RGM0287**
♀ SIZE: **S to XL**
P/N: **104RGM0292 to 104RGM0295**



SPORTS TEXTILE JACKET GREEN

There's no need to compromise on safety in warm weather. This summer jacket in Kawasaki green features mesh for cooling ventilation while removable CE-approved protectors on the elbow and shoulders provide impact protection. An inner waterproof lining protects against unexpected showers and it can be removed to take full benefit of the jacket's ventilation on hot, dry days.

SIZE: **S to 3XL**
P/N: **104RGM0262 to 104RGM0267**



SPORTS TEXTILE JACKET BLACK

"There's no need to compromise on safety in warm weather. This Kawasaki summer jacket in black features mesh for cooling ventilation while removable CE-approved protectors on the elbow and shoulders provide impact protection. An inner waterproof lining protects against unexpected showers and it can be removed to take full benefit of the jacket's ventilation on hot, dry days."

SIZE: **S to 3XL**
P/N: **104RGM0272 to 104RGM0277**



KAWASAKI SCOOTER JACKET

This lightweight textile jacket combines style and function and is ideal for casual wear and even a little town riding whatever the weather. The black Cordura 300 body is reinforced with Cordura 500 at the shoulders and elbows and is enhanced with Kawasaki green stripes and reflective details. Removable inner lining to suit the season.

SIZE: **S to 3XL**
P/N: **104RGM0332 to 104RGM0337**



KAWASAKI LEATHER PANTS

Italian class and style combine in these Kawasaki leather trousers, the perfect partner for the Kawasaki leather jacket. Premium cowhide leather was specified for optimal safety and riding comfort. A sanitized inner lining ensures your comfort and stays fresh. An integral zip connects the Kawasaki leather trousers to your jacket and removable braces give additional security of fit.

SIZE: **XS to 3XL**
P/N: **221RGM0131 to 221RGM0136**



NINJA LEATHER PANTS

Italian design brings style and flair to the Kawasaki Ninja leather trousers, the perfect complement to the Ninja leather jacket. Premium cowhide leather construction guarantees optimum protection and riding comfort. White Kawasaki logos on the black legs, complement the green and grey accents. A sanitized inner lining ensures your comfort and stays fresh. An integral zip connects the Ninja leather trousers to your jacket.

SIZE: **XS to 3XL**
P/N: **221RGM0121 to 221RGM0126**



VENTOUX TEXTILE PANTS

Kawasaki teamed up with motorcycle clothing specialist Bering to create our ultimate weather trousers, the Ventoux. These are the perfect match for the Ventoux jacket. With the combined know-how of Kawasaki and Bering, this collaboration assures you of the highest performance motorcycling garment, regardless of the elements. The Ventoux trousers innovative construction includes a waterproof membrane and breathable, warm lining - plus CE-approved protectors at key areas.

SIZE: **S to 3XL**
P/N: **221RGM0082 to 221RGM0087**



KAWASAKI TEXTILE PANTS

These waterproof touring trousers are designed and styled for everyday use. A combination zip allows them to attach to all of the leather jackets in the Kawasaki clothing range as well as most textile jackets.

SIZE: **XS to 3XL**
P/N: **221RGM0111 to 221RGM0117**



NINJA LEATHER GLOVES

Kawasaki Ninja gloves are of a special Italian design using ovine leather with premium-grade kangaroo skin for the underside and palms. Further protection comes from carbon fibre knuckle padding, aramidic fibres and a patented scaphoid protection system. Third and fourth fingers are stitched together for impact safety and exterior stitching improves feel and comfort. CE-approved for road riding.

SIZE: **XS to 3XL**
P/N: **077RGM0181 to 077RGM0186**



KAWASAKI RACING GLOVES GREEN

Kawasaki leather racing gloves, designed in Italy and constructed from black ovine leather with plastic fabric padding. Lime-green detailing and ventilated mesh on top and wrists. Velcro wrist closure. CE-approved.

SIZE: **XS to 3XL**
P/N: **077RGM0211 to 077RGM0216**



KAWASAKI WINTER GLOVES

Ride all year round. Fully waterproof winter gloves feature a three-layer construction for optimum cold and wet weather protection. The outer shell is HD Cordura with separate PU knuckle protection. A reflex insert adds visibility.

SIZE: **S to 3XL**
P/N: **077RGM0171 to 077RGM0176**



KAWASAKI RACING GLOVES WHITE

Kawasaki leather racing gloves, designed in Italy and constructed from ovine leather with plastic fabric padding. White leather accents and ventilated mesh on top and wrists. Velcro wrist closure. CE-approved.

SIZE: **XS to 3XL**
P/N: **077RGM0221 to 077RGM0226**



KAWASAKI LEATHER GLOVES

Kawasaki leather gloves are designed in Italy and are constructed from ovine leather with perforated panels and plastic fabric padding. Available in bicolor black and grey. Velcro wrist closure. CE-approved for road riding.

SIZE: **XS to 3XL**
P/N: **077RGM0191 to 077RGM0196**



KAWASAKI ASPHALT GLOVES

Short-cuff riding glove of stylish Italian design in ovine leather with perforated panels and plastic fabric padding. Cool retro distressed brown leather finish. Reinforced palm and thumb areas plus synthetic non-slip pads on index and middle fingertips. Embroidered Kawasaki logo on Velcro wrist closures.

SIZE: **XS to 3XL**
P/N: **077RGM0201 to 077RGM0206**



THERMAL SHIRT WINTER LONG SLEEVE

Be ready to ride even on the coldest days with this high-performance long-sleeve winter thermal shirt. High-tech fabrics maintain body core temperature while remaining breathable.

SIZE: **S/M - L/XL - 2XL/3XL**
 P/N: 153RGM0051 - 153RGM0053 - 153RGM0055



KAWASAKI THERMAL SHIRT INTERMEDIATE LONG SLEEVE

High-tech fabric construction means that this long-sleeve thermal shirt helps to maintain body core temperature while being breathable to keep you dry. Stretch fabrics provide a comfortable, ergonomic fit.

SIZE: **S/M - L/XL - 2XL/3XL**
 P/N: 153RGM0031 - 153RGM0033 - 153RGM0035



KAWASAKI RAIN PANTS

Be ready for unpredictable weather with these easy to carry waterproof trousers. They can be quickly and easily unpacked and pulled over your riding pants to keep the rain off. Made from premium quality nylon with reflective stripes incorporated in the design to aid visibility.

SIZE: **S to 3XL**
 P/N: 222SPM0017 to 222SPM0022



KAWASAKI BACKPROTECTOR

This Kawasaki back protector meets the highest level of protection as it complies with the CE EN 1621-2 Level 2 standard. Conforms to the shape of your body for optimum comfort.

P/N: 063RGS0015



THERMAL PANTS WINTER

Ergonomically fitted winter riding pants extend your riding season. High tech breathable fabrics keep the body dry while helping to maintain core temperature.

SIZE: **S/M - L/XL - 2XL/3XL**
 P/N: 221RGM0026 - 221RGM0028 - 221RGM0030



KAWASAKI THERMAL SHIRT SUMMER

Short sleeve shirt for summer wear under outer riding clothing. High-tech fabrics regulate body core temperature while remaining breathable. Stretch fabrics for comfort and excellent ergonomic performance.

SIZE: **S/M - L/XL - 2XL/3XL**
 P/N: 153RGM0041 - 153RGM0043 - 153RGM0045



KAWASAKI RAIN SUIT

Take this easy to carry waterproof rain suit with you on every ride and be ready for the weather to change. Made from premium quality nylon. Reflective Kawasaki logos provide additional visibility, especially in inclement weather. An outside leg pocket offers easily accessed storage.

SIZE: **S to 3XL**
 P/N: 230SPM0021 to 230SPM0026



KAWASAKI BALLACLAVA

A truly versatile garment for the Kawasaki rider – ballaclava, hat, headband or neckwarmer depending on how you want to wear it. Useful no matter the time of year.

SIZE: **Universal**
 P/N: 014RGM0002



KAWASAKI KNEE SLIDERS BLACK

Take the track day tarmac heroics challenge and see how long it takes you to grind off the logos on these Kawasaki-branded knee sliders.

P/N: 063RGS0009



TEAM GREEN FLEECE

Team Green fans can stand out from the crowd in this distinctive fleece. White and green panels are decorated with a small Team Green embroidered logo on the left of the chest and a large Kawasaki one across the back. A high collar zips to the top to keep the chill out.

SIZE: XS/S to 2XL/3XL
P/N: 072TGM0001 to 072TGM0006



TEAM GREEN

TEAM GREEN COMPETITION CLOTHING BASED ON THE WINNING STYLE OF OUR FACTORY RIDERS MADE AVAILABLE TO EVERYONE.



TEAM GREEN HOODY

When the wind gets up at the moto parc it's time to don your Team Green hoody. Kawasaki green and white panels in 100% cotton carry the Team Green logos screen-printed front and back.

SIZE: XS/S to 2XL/3XL
P/N: 166TGM0061 to 166TGM0066



TEAM GREEN HOODY KIDS

Junior Team Green fans can show whose side they are on, even when the temperature drops, with this 100% cotton hoody. The body has the trademark white and green panels decorated with a Team Green logo on the left of the chest and a large Kawasaki one across the back.

SIZE: 56 to 164
P/N: 166TGM0081 to 166TGM0088



TEAM GREEN T-SHIRT SHORT SLEEVES ♀

Female fans of Team Green have their own 100% cotton T-shirt. Cut to flatter the feminine form, the shirt has white and green panels on its black body and screen-printed Team Green logo on the front and a prominent Kawasaki emblem on the back.

SIZE: 2XS/XS to L/XL
P/N: 177TGM0171 to 177TGM0176



TEAM GREEN T-SHIRT SHORT SLEEVES

A Team Green T-shirt for MX fans to show their support at the track and beyond. There is no mistaking, Kawasaki's competition colours, enhanced by a small Team Green logo on the left breast and a large Kawasaki one on the back of the 100% cotton jersey shirt.

SIZE: XS/S to 2XL/3XL
P/N: 177TGM0161 to 177TGM0166



TEAM GREEN T-SHIRT SHORT SLEEVES KIDS

Team Green support becomes a family affair with this 100% cotton jersey junior T-shirt. Black with white and green panels – an instantly recognisable Kawasaki combination – the design is completed with screen-printed Team Green logos on the front and a Kawasaki logo on the back.

SIZE: 56 to 164
P/N: 177TGM0181 to 177TGM0188



TEAM GREEN POLO SHORT SLEEVES

Wear Kawasaki's MX competition colours with this Team Green polo shirt. Composed of the familiar white and green, the short-sleeve shirt also features an embroidered Team Green logo on the front left breast and a large Kawasaki one across the back.

SIZE: XS/S to 2XL/3XL
P/N: 139TGM0031 to 139TGM0036



JOIN THE KAWASAKI RACING TEAM
WITH OUR RANGE OF SBK REPLICA
CLOTHING AND ACCESSORIES JUST LIKE
SQUAD AND RIDERS WEAR AND USE.

SBK REPLICA



KRT SBK REPLICA JACKET

Whatever the weather, Kawasaki Racing Team fans stay warm and dry in this SBK replica fleece-lined polyester jacket. A full-length zipper protects the neck area and Velcro cuffs prevent draughts up the sleeves. Kawasaki Racing Team logos front and back and woven stitched sponsor logo patches. There are useful pockets on the left chest and inside the jacket. Kawasaki-green panels and piping add to the jacket's stylish lines.

SIZE: S/M to 3XL/4XL
P/N: 104KRM0102 to 104KRM0107



KRT SBK REPLICA BODY-WARMER

This is the body warmer used by the official Kawasaki SBK team. Made from fleece-lined, high-quality polyester and decorated with Kawasaki Racing Team green piping for maximum practicality with sporty styling. The front zipper pulls to the top of the neck for warmth. It features white embroidered Kawasaki Racing Team logos and woven sponsor patches. Grey mesh panels for 2016 season.

SIZE: S/M to 3XL/4XL
P/N: 104KRM0112 to 104KRM0117



KRT SBK REPLICA SWEATSHIRT

Official Kawasaki Racing Team SBK replica sweatshirt in 80% cotton and 20% polyester. High neck zipper will keep you warm. There are white embroidered Kawasaki Racing Team logos front and rear with patched sponsor logos and the grey mesh side panels complete the sporty image. Ribbed cuffs and side pockets add extra comfort. Black-on-white Kawasaki Racing Team-embossed tape lines the neck area.

SIZE: S/M to 3XL/4XL
P/N: 166KRM0252 to 166KRM0257



KRT SBK REPLICA SWEATSHIRT ♀

Women's version of the 80% cotton and 20% polyester sweatshirt with grey mesh insert side panels. Printed Kawasaki Racing Team logos adorn the tailored black body, a large one on the back and a smaller one on the left breast. Kawasaki-green piping and black-on-white Kawasaki Racing Team-embossed tape lines the neck area. Welcome to the team, ladies!

SIZE: XS/S to XL/2XL
P/N: 166KRM0262 to 166KRM0266



KRT SBK REPLICA HOODED SWEATSHIRT

Keep cosy with this SBK replica hooded sweatshirt in 80% cotton and 20% polyester. A bold, Kawasaki Racing Team logo decorates the rear with a smaller one on the left chest. Sponsor logos are woven patches. Grey mesh panels provide contrast, and the piping is the same trade mark shade. Ribbed cuffs and side pockets add extra comfort. Black-on-white Kawasaki Racing Team-embossed tape lines the neck area.

SIZE: **S/M to 3XL/4XL**
 P/N: **166KRM0242 to 166KRM0247**



KRT SBK REPLICA SWEATSHIRT KIDS

Junior version of the 80% cotton and 20% polyester sweatshirt with grey mesh insert side panels. Large Kawasaki Racing Team logo on the back and a smaller one on the left breast, patched sponsor logos on the right side. Kawasaki-green piping and black-on-white Kawasaki Racing Team-embossed tape lines the neck area.

SIZE: **44/56 to 140/164**
 P/N: **166KRM0271 to 166KRM0278**



KRT SBK REPLICA POLO SHORT SLEEVES

Share the style of the Kawasaki SBK squad with this official replica shirt. The 100% cotton piquet polo uses Kawasaki-green piping to stunning effect. Patch sponsor logos stand out and the grey mesh side panels complete the sporty image. Kawasaki branded buttons with the black-on-white Kawasaki Racing Team-embossed tape lines the neck area.

SIZE: **S/M to 3XL/4XL**
 P/N: **139KRM0072 to 139KRM0077**



KRT SBK REPLICA SHIRT SHORT SLEEVES

Official SBK replica 100% cotton shirt features many stunning details. Kawasaki-green piping and grey mesh panels accentuate the sides. Black buttons on the front opening are embossed with the Kawasaki logo. There's a useful slit pocket on the left chest. There are white embroidered Kawasaki Racing Team logos front and rear while the sponsors are woven stitched patches. Black-on-white Kawasaki Racing Team-embossed tape lines the neck area.

SIZE: **S/M to 3XL/4XL**
 P/N: **153KRM0112 to 153KRM0117**



KRT SBK REPLICA T-SHIRT SHORT SLEEVES

Official Kawasaki Racing Team replica T-shirt made of the finest cotton jersey. High quality printed Kawasaki Racing Team logos and sponsor logos on the arms. Kawasaki-green piping and grey mesh side to complete the sporty image. Black-on-white Kawasaki Racing Team-embossed tape lines the neck area.

SIZE: **S/M to 3XL/4XL**
 P/N: **177KRM0282 to 177KRM0287**



KRT SBK REPLICA T-SHIRT SHORT SLEEVES ♀

Women's 100% cotton Kawasaki Racing Team replica fitted T-shirt. High quality printed Kawasaki Racing Team logos. Kawasaki-green piping and grey mesh side panels complete the sporty image. Black-on-white Kawasaki Racing Team-embossed tape lines the neck area.

SIZE: **XS/S to XL/2XL**
 P/N: **177KRM0292 to 177KRM0296**



KRT SBK REPLICA T-SHIRT KIDS SHORT SLEEVES

Junior 100% cotton jersey black T-shirt for the young Kawasaki Racing Team fan. Printed white logos front and rear plus Kawasaki-green piping and grey mesh side panels for stylish impact. Neck area lined with black-on-white Kawasaki Racing Team-embossed tape.

SIZE: **44/56 to 140/164**
 P/N: **177KRM0301 to 177KRM0308**



KAWASAKI KRT WINTER TEST T-SHIRT SHORT SLEEVES

Kawasaki development never stops. Winter testing is key to Kawasaki Racing Team, a fact celebrated in this 100% cotton black T-shirt with a white winter test logo on the front and a black ton-sur-ton Kawasaki Racing Team legend on the back.

SIZE: **XS/S to 2XL/3XL**
 P/N: **177KRM0271 to 177KRM0277**



KRT SBK REPLICA PANTS

These Kawasaki Racing Team pants are designed for comfort with style. Embroidered KRT logos decorate the Velcro closure pockets on the rear of the pants and sides of the legs. Grey mesh details.

SIZE: 30/31 to 40/41
P/N: 132KRM0052 to 132KRM0057



KRT SBK REPLICA BERMUDA

Feel part of the team with these bermuda shorts in a mixture of 50% cotton and polyester. Useful, deep flap pockets with Kawasaki Racing Team embroidering. Kawasaki-green piping on front and rear and grey mesh details.

SIZE: 30/31 to 40/41
P/N: 132KRM0062 to 132KRM0067



KAWASAKI BEANIE TOM SYKES #66

A Tom Sykes beanie hat in black with Kawasaki green and grey piping. High quality embroidered Kawasaki Racing Team logos in white front and rear with Sykes' number #66 and Ninja logo on opposite sides.

SIZE: Universal
P/N: 023KRM0023



KAWASAKI BEANIE JONATHAN REA #65

A Jonathan Rea black beanie hat decorated with Kawasaki green and grey piping. High quality embroidered Kawasaki Racing Team logos in white front and rear with Rea's #65 racing number on one side and a Ninja logo on the other.

SIZE: Universal
P/N: 023KRM0025



KAWASAKI CAP TOM SYKES #66

Kawasaki Racing Team fans will stand out in any crowd in this black cap with its Kawasaki green piping and mesh details. The 3D Kawasaki Racing Team embroidery front and back gives bold depth and contrast with the Tom Sykes' #66 number on one side and Ninja logo on the other.

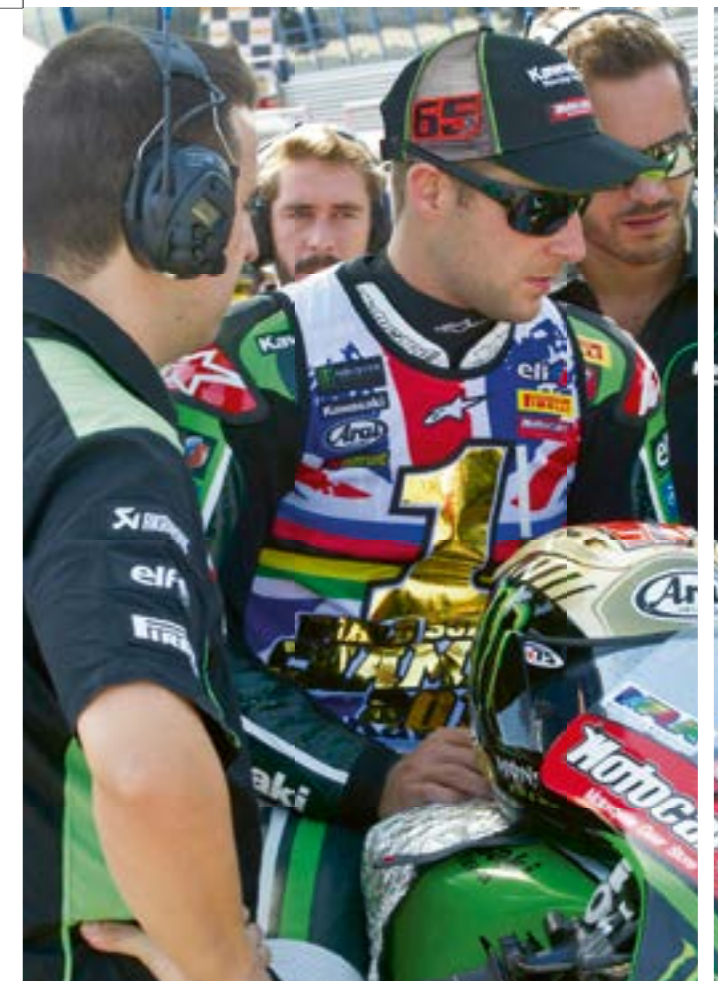
SIZE: Universal
P/N: 023KRM0022



KAWASAKI CAP JONATHAN REA #65

Kawasaki Racing Team rider Jonathan Rea cap in black with Kawasaki green piping and side mesh. Rea's number #65 decorates one side and a Ninja logo the other.

SIZE: Universal
P/N: 023KRM0024





KRT SBK REPLICA MUG

Drink in style with the 100% ceramic mug featuring the Kawasaki Racing Team and Ninja logo.

P/N: 122KRM0001



KRT SBK REPLICA LANYARD

Whether you clip on your paddock pass or keys; you will carry them in style. Black with Kawasaki-green stripes and white Kawasaki Racing Team logos.

P/N: 107KRM0004



KRT SBK REPLICA KEY RING

Never search for your keys again and support the Kawasaki Racing Team with this 100% pvc keyring.

P/N: 107KRM0003



KRT SBK REPLICA UMBRELLA

Who cares about the weather when you can take shelter from the storm under your own personal Kawasaki Racing Team canopy.

P/N: 179KRM0001



KRT SBK REPLICA PONCHO

Kawasaki Racing Team fans shrug off the rain in this Kawasaki-green poncho. Kawasaki Racing Team printed logo in black feature prominently on the chest. This poncho comes in a small, easy to carry, storage ball.

SIZE: **Universal**
P/N: 104KRM0070





KRT SBK REPLICA NECK TUBE

Ride your Ninja in style with this Kawasaki Racing Team neck tube.

SIZE: **Universal**
P/N: **014KRM0003**



KRT SBK REPLICA NOTEBOOK

Write down the lap times of your favourite racer in this 15.5 cm by 11 cm Kawasaki Racing Team notebook with pen.

P/N: **134KRM0004**



KRT SBK REPLICA WRIST BAND

Useful 95% cotton and 5% elastane sweatbands with Kawasaki Racing Team and Ninja logo in white for the sporty fan, or useful as race-style adornments for your brake reservoir.

SIZE: **Universal**
P/N: **186KRM0003**



KRT SBK REPLICA SOCKS LONG

The perfect complement for your Kawasaki Racing Team outfit. The long socks, 50% acryl and 50% polyester, in black with Kawasaki-green stripes featuring the Kawasaki Racing Team logo in white are a perfect mixture of comfort and style.

SIZE: **31/34 to 43/46**
P/N: **160KRM0011 to 160KRM0014**



KRT SBK REPLICA SOCKS SHORT

Using the same materials as the long socks, these black ankle-length versions are made from 50% acryl and 50% polyester.

SIZE: **31/34 to 43/46**
P/N: **160KRM0021 to 160KRM0024**



KRT SBK REPLICA FLAG

Show yourself in the crowd and support the Kawasaki Racing Team with this 100% polyester flag.

SIZE: **140 cm x 90 cm**
P/N: **008KRM0001**



KAWASAKI TOM SYKES "SYKES" T-SHIRT SHORT SLEEVES

The Tom Sykes men's T-shirt is styled on a true champion. Printed logos display the great man's name and his '66' race number. A contrasting red stripe separates the black body and white neck. A large Union Flag is printed at the rear of the neck with a smaller tag of the UK flag at the waist.

SIZE: S to 2XL
P/N: 177SPM0802 to 177SPM0806

TOM SYKES MERCHANDISE

A RANGE OF CLOTHING AND ACCESSORIES TO DRESS AND DELIGHT EVERY FAN OF THIS KAWASAKI RACING TEAM WORLD SUPERBIKE HERO.



KAWASAKI TOM SYKES "66" T-SHIRT SHORT SLEEVES

There's a retro twist to this race-stripe Tom Sykes men's T-shirt. The black cotton tee has a vertical white-edged red racing stripe printed on the front with the Sykes name proudly emblazoned across it. The Union Flag of Sykes' home nation decorates the left breast and is reprised with a tag on the waistband.

SIZE: S to 2XL
P/N: 177SPM0812 to 177SPM0816



KAWASAKI TOM SYKES "SYKES" HOODY

Not every round of the World Superbike Championship is held in a tropical climate. This hoody keeps the chill out when the temperature drops. The zip-front with drawstring hood has a snug knitted waistband and cuffs. The celebrated Sykes 66 is printed on the front and sleeves with a Union Flag at the rear of the neck and tag at the waist.

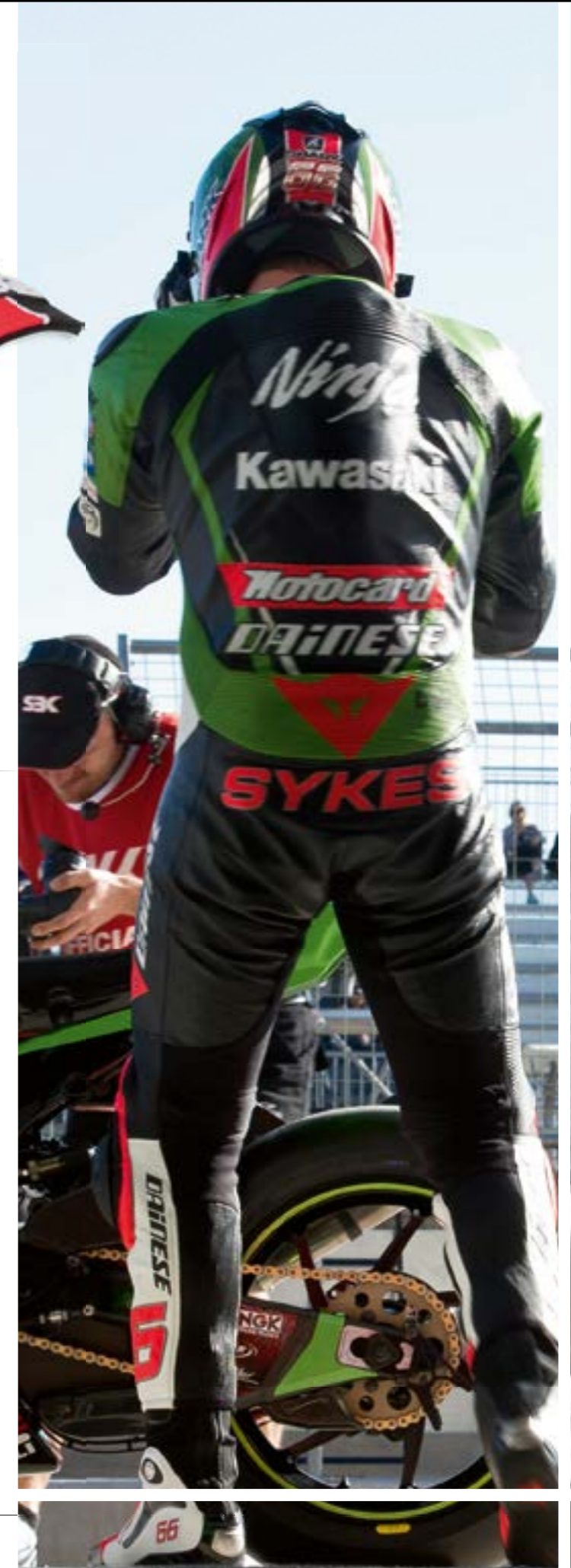
SIZE: S to 2XL
P/N: 166SPM0332 to 166SPM0336



KAWASAKI TOM SYKES "66" CAP

Be like Tom and keep a cool head at all times. The Tom Sykes cap features a retro racing stripe plus a luxuriously embroidered 66 logo on the front and a Union Flag on the back, and the race ace's name across its prominent peak.

SIZE: 1 size
P/N: 023SPM0025



KAWASAKI TOM SYKES "66" TANK TOP ♀

This bold and striking tank top uses stylish design to let female fans show where their loyalties lie. Carry Sykes' '66' race number boldly on your chest. Retro red and white stripes across the shoulder straps separate a Union Flag and Tom Sykes' '66' race number. Union Flag detail at waist.

SIZE: XS to XL
P/N: 177SPM0822 to 177SPM0826



KAWASAKI TOM SYKES "SYKES" T-SHIRT KIDS SHORT SLEEVES

Junior version of the black, white and red Sykes T-shirt has all the features and style of the adult version. Logos front and back display your hero's name and his celebrated '66' adorns the chest band sleeves. The Union flag of Sykes' home nation features proudly on the back and on a tag on the waistband.

SIZE: 2-3 to 10-11
P/N: 177SPM0832 to 177SPM0836



KAWASAKI TOM SYKES "66" KEY CHAIN

We can't give you the keys to Tom's Kawasaki WSB bike but we can give you a unique attachment for your own. A moulded rubber #66 logo makes them even easier to lay your hands on.

P/N: 107SPM0028

BAGS, WATCHES & SUNGLASSES

BAGS, WATCHES & SUNGLASSES



THE DETAILS MAKE THE DIFFERENCE AND THIS UNIQUE ARRAY OF BAGS, WATCHES AND SUNGLASSES ARE DESIGNED AND MADE TO SUIT EVERY KAWASAKI STYLE.



KAWASAKI KIT BAG

Carry all of your riding gear in the Kawasaki gear bag. Massive 160-litre capacity will swallow up riding suit, helmet, boots and more. The nylon bag's wheeled design makes for easy transportation. There's even a pull-mat to keep your feet dry when changing.

P/N: 004SPM0014



KAWASAKI DUFFEL BAG

Hardwearing yet lightweight 49-litre Kawasaki duffel bag in heavy duty nylon. Features a large main compartment with an additional end storage compartment and external zippered front and side pockets. Can be worn as backpack.

P/N: 004SPM0015



WATERPROOF EXPEDITION BAG 35L

35 liter Luggage roll 100% dust and waterproof. With shoulder strap, business card pocket and D-rings for optional attachment.(ø ±30 cm, Length 55 cm)

P/N: 093LUU0002



KAWASAKI ALL ELEMENTS BACKPACK

Kawasaki all elements 26-litre backpack keeps the rain out with a roll-top construction to make it waterproof. Dual-density shoulder straps and waist belt system keep the pack secure at all speeds. An airflow panel keeps your back cool. Easy access zippered front pocket.

P/N: 004SPM0016



KAWASAKI BACKPACK SEMI-HARD

An aerodynamic molded weather-resistant design finished in carbon weave graphic offering a capacity up to 24.17-litres when fully expanded. Protective laptop compartment. Luxury linings for the Kawasaki backpack semi-hard and many storage compartments. Padded shoulder straps. Hydration ready.

P/N: 004SPM0017



NINJA BACKPACK SEMI-HARD

With an aerodynamic molded design for reduced drag while riding, a useful 18.4-litre capacity and a laptop compartment for computers up to 15inch the Ninja backpack semi-hard is a versatile backpack. Multiple internal compartments, weather resistant, plus padded back and straps. Hydration ready.

P/N: 004SPM0019



KAWASAKI BACKPACK

The perfect Kawasaki backpack for everyday use. Generous 40-litre capacity and the capability to carry a laptop up to 17inch plus padded tablet sleeve. Air mesh padded back panel, padded shoulder straps and sternum strap.

P/N: 004SPM0020



KAWASAKI LEISURE SUNGLASSES

Classic-shaped frames in black nylon offer a unique styling twist with white inners, carrying UV-protective graduated lenses.

P/N: 225SPM0028



KAWASAKI RETRO WATCH

Classic time-keeping from Kawasaki with this retro tachymeter. The logo-etched stainless steel case is water-resistant to 10ATM and white numbers and hands feature on a black face with a vintage Kawasaki logo. Black leather strap. Date notification.

P/N: 186SPM0023



KAWASAKI CARBON WATCH

Kawasaki time-keeping comes right up to the moment with this tachymeter watch featuring a carbon face with subtle Kawasaki Racing Team logo. The dial also features effective use of Kawasaki green in the hands and markings. Water-resistant to 10ATM. Metal strap. Date notification.

P/N: 186SPM0025



KAWASAKI CHAMELEON SUNGLASSES

With two sets of interchangeable UV-protective lenses, these black nylon framed sunglasses offer two styles in one. The black nylon frames have contrasting green inserts and white Kawasaki logos on the legs.

P/N: 225SPM0030



STAINLESS STEEL SUNGLASSES SILVER

Distinguished aviator-style shades with flexible silver stainless steel frames. Black rubber leg inserts are a stylish and practical detail. Lenses are anti-reflective and UV protective.

P/N: 225SPM0018



KAWASAKI SPORTS WATCH

Analogue meets digital in the Kawasaki sports watch. An alarm function ensures you never miss an appointment while a digital stopwatch offers pinpoint timing. Kawasaki green carbon dial. Dual time function. Silicon strap. Water-resistant to 5ATM. Date notification.

P/N: 186SPM0022



KAWASAKI WATCH

This Kawasaki watch has a clean design. At-a-glance time checks are made easy by white hour and minute hands on the black face. Hours are marked in grey and white and the green minute markers match the second hand and anodised winding button. Silicon strap. Date notification.

P/N: 186SPM0024



KAWASAKI SPORT SUNGLASSES

A modern geometric frame in classic Kawasaki green and black colours makes these sportive design sunglasses stand out. A single-piece UV-protective lens allows the frame to follow a single line. White Kawasaki logo on legs.

P/N: 225SPM0029



RACING SUNGLASSES BLACK

Kawasaki racing sunglasses in black. Anti-reflective, UV-protective lenses and a nylon frame featuring understated white Kawasaki logos on the sunglasses' slim legs. Can't choose between these and the green ones? Equip yourself with both.

P/N: 225SPM0017

MERCHANDISE

THERE IS SOMETHING TO DELIGHT AND AMUSE KAWASAKI FANS OF ALL AGES IN THIS COLLECTION OF FUN AND USEFUL GIFTS. EVERY ONE A KAWASAKI CLASSIC.



KAWASAKI BIB

Your junior champion can wear their Kawasaki colours at feeding time with this 100% cotton bib, providing a generous 20 x 30 cm of protection from stray baby food.

P/N: 023SPM0028



KAWASAKI PACIFIER SET

Happy babies the Kawasaki way with a pacifier featuring a riding character and the Kawasaki logo. Supplied as a pack of two and BPA-free.

P/N: 023SPM0026



KAWASAKI BABY BOTTLE

Pit stop time for junior? Refuel your baby with this Kawasaki feeding bottle. The 250ml bottle is guaranteed free of BPA compounds.

P/N: 015SPM0021



KAWASAKI DINER SET

Kids will clear their plates every time when their meals are served up Kawasaki-style. The melamine plate, bowl and mug come with a junior knife and fork packed in a presentation gift box. CE approved.

P/N: 023SPM0027



KAWASAKI BEAR

This Kawasaki bear is proud to how his allegiance. Perfect for Kawasaki fans young and not so young. 25 cm tall.

P/N: 176SPM0004



KAWASAKI JET SKI DUCKY

Kawasaki fun comes to bath time with this floating toy. Getting the kids to take a bath just got easier with this 13 cm vinyl novelty.

P/N: 176SPM0005



KAWASAKI HOUSE SHOES KIDS

Soft and warm children's house shoes in white with lime-green trim and featuring the Kawasaki rider character. Anti-slip soles for extra grip.

SIZE: 25/26 to 31/32
P/N: 237SPM0060 to 237SPM0063



KAWASAKI FLIP FLOPS

Casual wear for summer with these black and Kawasaki green flip-flops. Cushioned for comfort with textured soles the footwear also features rubber straps detailed with white Kawasaki logos.

SIZE: 41 to 46
P/N: 237SPM0080 to 237SPM0085



KAWASAKI HAMMOCK

When it's time to kick back and relax, what better way to make the most of rest and recreation time than reclining in this Kawasaki hammock? Go on, you've earned a break.

P/N: 186SPM0020



KAWASAKI FIRST AID KIT

Keep a Kawasaki first aid kit at hand ready to deal with minor cuts and bruises. Measuring just 19.5x12x4 cm it can be easily stored under a motorcycle seat pad.

P/N: 186SPM0021



KAWASAKI CAP KIDS

Kawasaki's youngest fans will be delighted by this black cap featuring the Kawasaki character and logo.

SIZE: Universal
P/N: 023SPM0021



KAWASAKI SURF FLIP FLOPS

Make waves at the beach or anywhere with these surf-style flip-flops. Luxuriously soft and comfortable in black with Kawasaki logos on the straps.

SIZE: 41 to 46
P/N: 237SPM0090 to 237SPM0095



KAWASAKI WALL CLOCK

It's always Kawasaki time when you adorn your wall with this impressive clock. Large 20 cm diameter makes it easy to tell the time from a distance.

P/N: 186SPM0013



KAWASAKI WRISTBAND

This lime-green silicon wristband features an embossed Kawasaki logo and marks you out as part of the Kawasaki gang.

P/N: 186SPM0015



KAWASAKI FOLDABLE BOTTLE KIDS

Junior foldable drinking bottle is a fun and practical accessory that will help keep your kids hydrated.

SIZE: 350ml
P/N: 015SPM0019



KAWASAKI HOUSE SLIPPERS

Keep it Kawasaki at home with these soft, cosy and comfortable lime-green Kawasaki slippers.

SIZE: 39/40 to 45/46
P/N: 237SPM0070 to 237SPM0073



KAWASAKI UMBRELLA

Take shelter under this black Kawasaki umbrella. Decorated with a Kawasaki logo printed in white on alternate panels and a lime green piping.

P/N: 179SPM0004



KAWASAKI UMBRELLA SMALL

Easy to fold into a compact package for storage in your backpack or topcase. Light weight and still a surefire performer in the wet.

P/N: 179SPM0005



Z2 750 RS 'SUPER 4' -1973 SCALE MODEL

A detailed 1:6-scale model of the 1973 Kawasaki Z2, the 750cc version of the Z1 for the Japanese market. The model has many operating features including a spring loaded kick starter and twistable throttle. Total length is 35cm.

SCALE: 1:6
P/N: 226SPM0014



KAWASAKI BIKE TOY

Flywheel-powered lime-green Kawasaki bike toy will keep your kids amused for hours – once you've finished playing with it, that is. 4.8 cm long.

P/N: 226SPM0015



KAWASAKI NINJA ZX-10R BALANCE BIKE

Get the next sportsbike generation rolling on a Kiddimoto in the style of the mighty ZX-10R. The robust replica features a wooden frame, aluminium rims with pneumatic tyres and a foam seat and handlebar grips. Suits children from 80 to 105 cm tall.

P/N: 015SPM0041



KAWASAKI FOLDABLE BOTTLE

Foldable drinking bottle with carabiner for easy attachment to your backpack or belt loop.

SIZE: 480ml
P/N: 015SPM0018



NINJA KEY RING

Keep you keys together with this scratch resistance PVC key ring featuring the official Ninja logo.

P/N: 107SPM0025



KAWASAKI VINTAGE PARKING PLATE

Vintage-style pressed aluminium Kawasaki Parking Only plate offers friendly advice as to which brand of bikes is welcome on you property. 20 cm wide, 30 cm tall.

SIZE: 20x30 cm
P/N: 186SPM0014



KAWASAKI KX BALANCE BIKE

Styled like a Kawasaki KX, the Kiddimoto MX bike will delight any junior off-road fan. As with the rest of the Kawasaki Kiddimoto range the bike features a wooden frame, aluminium rims with pneumatic tyres and a foam seat and handlebar grips. Suits children from 80 to 105 cm tall.

P/N: 015SPM0042



KAWASAKI KEY RING

Never loose your bike key again with this scratch resistance PVC key ring.

P/N: 107SPM0024



KAWASAKI BEARING KEY RING

Organise your keys and lessen the risk of misplacing them with this stylish Kawasaki lime green keychain. Its rotating bearing feature will keep you amused in idle moments.

P/N: 107SPM0022



KAWASAKI NINJA H2R KEY RING

This is the fob for the key to the must-have bike of the moment – Kawasaki's ground-breaking and class-defining H2R. Made in brushed metal with H2R stamped on the front and a laser embossed Kawasaki logo on the back, it's a keyring fit for the ultimate superbike.

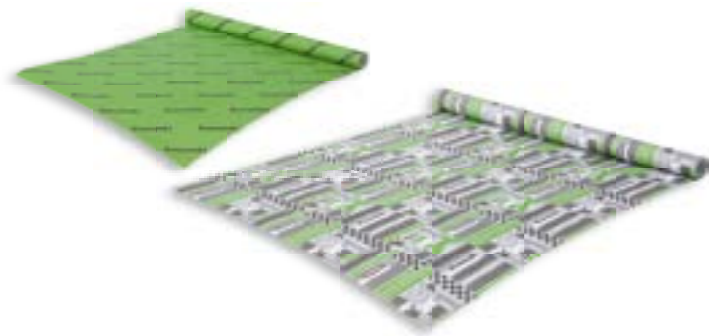
P/N: 107SPM0030



KAWASAKI KEY SLEEVE

Kawasaki green key sleeve with embossed logo attaches securely to your bike key. The PU sleeve lets you keep your key safe with no possibility of it damaging pocket or luggage linings.

P/N: 107SPM0029



KAWASAKI WRAP PAPER

Wrap your present in Kawasaki style paper. Each roll contains in total 51 cm by 200 cm of paper.

P/N: 226SPM0018



KAWASAKI COASTER SET

These Kawasaki coasters give you somewhere to place those post-ride drinks. Tyre effect rims prevent the 9.8 cm PVC coasters from sliding too. Supplied as a set of four, each with a different design.

P/N: 176SPM0006



KAWASAKI METALLIC BOTTLE

Metal drinking bottle with carabiner for easy attachment to your backpack or belt loop.

P/N: 015SPM0020



KAWASAKI RACE TRACK WALL STICKERS

Devise your own challenging Kawasaki race track to decorate a flat surface such as a wall or a door with this 21 x 42 cm sticker sheet set.

P/N: 226SPM0016



KAWASAKI KIDS TATTOO SET

Kids love pretend tattoos – so do some adults too. These temporary tattoos will stick around for a couple of days after they've been applied. Tattoo sheet 11 x 13 cm with several designs.

P/N: 226SPM0017



KAWASAKI CARD HOLDER

This card holder securely attaches to the back of your mobile phone with 3M tape. Keep your phone and bank or credit card together. What else do you need to take with you?

SIZE: 8.5 x 5.5 cm
P/N: 107SPM0023



KAWASAKI MONEY-BOX

Small change soon adds up to meaningful amounts of cash. Save it in this Kawasaki moneybox with its full-colour printed design.

SIZE: 8,6 x 8,6 x 10,5 cm WxDxH
P/N: 186SPM0016



KAWASAKI NINJA H2R IPHONE 5 COVER

Protect your iPhone 5/5s with this Uguard.me case. The slimline protective case is branded with the logo of the world's most powerful production bike, the Kawasaki H2R. The case's tactile resin material self-heals small scratches and its super anti-slip feature means it stays put on smooth, shiny surfaces.

P/N: 225SPM0026



KAWASAKI NINJA H2R IPHONE 6 COVER

Kawasaki's H2R, the fastest-ever production bike, is celebrated on this Uguard.me case for the iPhone 6/6s. A strong performer in its own right, the case's tactile resin material self-heals small scratches and its super anti-slip feature means it stays put on smooth, shiny surfaces.

P/N: 225SPM0025



KAWASAKI IPHONE 5 COVER

Your iPhone 5/5s will be safer from accidental damage with this Kawasaki branded slimline Uguard.me case. The case's soft resin construction has strong anti-slip self properties when placed on smooth, shiny surfaces, and small scratches in the material will self-heal.

P/N: 225SPM0024



KAWASAKI IPHONE 6 COVER

Kawasaki protection for your iPhone 6/6s comes in the form of this Uguard.me case. The slimline resin cover carries a Kawasaki logo and the formulation of the material enables it to stick to smooth surfaces while any small scratches on the case will self-heal.

P/N: 225SPM0023

KAWASAKI CUSTOM-MADE GEAR

SHARE THE LOVE FOR RACING WITH OUR CUSTOM-MADE GEAR. DESIGN YOUR OWN WINNING LEATHERS IN A STYLE WHICH SUITS YOU BEST.



AVAILABLE FROM EARLY 2016

- 1 COLORS
- 2 ACCESSORIES
- 3 NAME
- 4 LOGO
- 5 OPTION
- 6 MEASUREMENTS
- 7 SUMMARY
- 8 SEND



KAWASAKI CUSTOM-MADE GEAR

Go to kawasaki.eu/custom-made-gear and enter the configurator to design your very own racing suit. Time to enhance your Kawasaki performance.

kawasaki.eu/custom-made-gear

KAWASAKI RACER LEATHERS

Cow leather (1.2 mm - 1.3 mm) or Kangaroo leather (1.0 mm - 1.1 mm). G-nforced™ stretch panels. Ventilated. CE EN 1621-1 protection inserts on shoulders, elbows, knee. Additional foam protection on legs and body. Elasticated leather panels on shoulders, back and knees. New 3D™ inner liner with stretch panels. Aerodynamic hump. Removable knee sliders.

KAWASAKI RAPID LEATHERS

Cow leather (1.2 mm - 1.3 mm) or Kangaroo leather (1.0 mm - 1.1 mm). Ventilated. Dynamic parts. CE EN 1621-1 protector on shoulders, elbows, knees. Additional foam protection on legs and body. Elastic insert on shoulders, back and knees. Inside lining with stretch panels. Big aerodynamic hump. Removable knee sliders.

Always ride responsibly. Respect the law and the environment.
Always ride within the limits of your skills, your experience, and
your machine. Wear an approved helmet and protective clothing.
Never drink and ride. Specifications, prices and/or specifications of
illustrated equipment may change without prior notice.
Specifications and illustrated equipment may vary by market.
Availability while stocks last.

Copyright © 2015 Kawasaki Motors Europe N.V.

All rights reserved. Subject to the exceptions provided for by law,
no part of this publication may be reproduced and/or published in
print, by photocopying, on microfilm, electronically or in any other
way without the prior written consent of the copyright holder.



The Kawasaki Genuine Products logo is a mark of quality.
It can only be found on products manufactured to our exacting
standards either by or on behalf of Kawasaki Motors Europe N.V.



Kawasaki Motors Europe N.V.

1 Dukes Meadow, Millboard Road
Bourne End, Bucks, SL8 5XF

Telephone: 01628 856600
Kawasaki Information Service: 0845 600 2442
Fax: 01628 856796
www.kawasaki.co.uk

E99941-2987

For more information, please visit www.kawasaki.co.uk

Your official Kawasaki dealer:

