

*Ninja*

# **SUPERSPORT & SPORT** **2018**



**Kawasaki**



# Kawasaki motorcycles are a distillation of the most advanced technology the world has to offer.

Representing a unique engineering heritage and a wealth of technological expertise combined with passion, performance and individuality, Kawasaki motorcycles are not just about high performance. They are a crystallisation of advanced technology arising from the collective efforts of the Kawasaki Heavy Industries Group, whose activities span a wide range of business domains including Land, Sea and Air Transportation Systems, Energy & Environmental Engineering and Industrial Equipment.



Kawasaki motorcycles possess both power and grace so are often recognised as being different to other bikes. This results from certain guiding principles adopted at the design stage. Rideology is Kawasaki's rider-centric development philosophy focused on how the riding experience offered by a Kawasaki is crafted, ensuring that our machines are fun to ride and rewarding to control. This approach has been the force behind many of our legendary machines, and in our pursuit of all possibilities it will continue to guide the future creation of Kawasaki motorcycles.



WORLDSBK CHAMPION  
# R 3 P E A T  
2015 / 2016 / 2017  
SBK



# WORLD CLASS

IF YOU COMPETE YOUR NATURAL INSTINCT IS TO WIN. KAWASAKI FEEDS THAT DESIRE TO DOMINATE ON TRACK AND TO BE BEST IN CLASS FROM A FIRST FORAY INTO CLUB RACING ALL THE WAY TO THE PINNACLE OF PRODUCTION BASED RACING IN WORLDSBK AND MXGP.

Three years ago Jonathan Rea won his first WorldSBK title aboard the Ninja ZX-10R. He's won every title since making it three championships in a row. Kawasaki has won manufacturer and team titles every year since 2015 creating a remarkable nine award haul. With the latest Ninja ZX-10RR Rea and teammate Tom Sykes are odds-on favourites for 2018 while Kenan Sofuoglu chases a 4th Kawasaki Supersport title. If you want to count the wins count on Kawasaki.

# FIRST TO FINISH

To finish first, first you have to finish. You need season long performance from you and your machine. KX gives you the confidence to compete and reassurance to race week in week out. While others may briefly shine and fade, KX riders can rely on rugged reliability and inspired innovation. From MXGP and MX2 to WMX and your local club championship KX riders have every right to be the first across the finishing line.





Inspired by the iconic supercharged Ninja H2 & H2R and the World Championship winning ZX-10R, every Ninja is designed to be the ultimate motorcycle in its class. Kawasaki Ninja,

# LEGENDARY PERFORMANCE.

From dealership to road excellence and track day to Championship success one name is constant, Ninja from Kawasaki. Track dominance, championship success and road rider loyalty, each ingredient combined to continue the mighty Ninja legend.



# NINJA ZX-10R

In the hands of Jonathan Rea, the Ninja ZX-10RR dominated the 2017 WorldSBK Championship. Now that winning machine and the standard Ninja ZX-10R are joined by the stunning Ninja ZX-10R SE, featuring electronic semi-active suspension.



# FEATURES

## NINJA ZX-10R

- Intelligent ABS brake system • Sport traction control system • 3 power mode selections • Cornering management • Engine brake control • 998 cm<sup>3</sup> In-line Four engine • 210 PS • Showa WSB-Developed Balance Free Front Fork • Horizontal Back-link with Showa BFRC lite shock unit • Gear position indicator • Quickshifter (up) • Brembo M50 radial mount calipers and discs • Low drag cowling
- Electronic throttle valves • Öhlins Electronic steering damper

## NINJA ZX-10R SE

- State-of-the-art electronic suspension (KECS) • Specially designed Marchesini forged wheels • Dual-direction quick shifter system

## NINJA ZX-10RR

- Race Ready engine • Specially Designed Marchesini Forged Wheels • Pirelli Diablo Supercorsa SP tyres • Revised suspension settings • Dual-direction quick shifter system • Single seat model

### ▼ UNDER ITS SKIN

is an array of the latest technology developed by the Kawasaki Racing Team ready for road riders and track day fans alike.



## NINJA ZX-10R SE

## NINJA ZX-10R

## NINJA ZX-10RR



METALLIC FLAT SPARK BLACK /  
METALLIC MATTE GRAPHITE GRAY

LIME GREEN / EBONY /  
METALLIC GRAPHITE GRAY (KRT REPLICA)

FLAT EBONY



# The closest thing to a WSBK Champion machine

## ▼ AERODYNAMIC BODYWORK

Larger upper cowl cuts through the air more efficiently, and offers the rider greater wind protection.

## BALANCE FREE FRONT FORK SUPENSION

Jointly developed with Showa in WorldSBK, this highly advanced fork with damping force generated outside the main tube translates to more composed corner entry on the track.



1

**1.** The track focused 998 cm<sup>3</sup> engine offers a linear power delivery right to its heady peak power. For maximum track-riding efficiency, great care was taken to ensure ideal engine manageability. The light weight crankshaft creates a quick-revving character contributing to light handling. **2.** Specially developed Öhlins electronic steering damper provides just the right amount of damping based on vehicle speed and degree of acceleration or deceleration. **3.** Compact IMU operates in 6 degrees of freedom. Combined with Kawasaki's proprietary dynamic modelling program, input from the IMU enables precise chassis orientation awareness, the key to bringing Kawasaki's electronic rider aids to the next level. Feedback from the IMU enables the addition of the Kawasaki Cornering Management Function. This function uses KIBS and S-KTRC to assist riders in tracing their intended line through the corner. **4.** Only the best. Dual Brembo M50 monobloc calipers gripping Ø 330 mm discs, specially prepared radial-pump master cylinder and race-quality steel-braided lines deliver the best braking performance.



2



3



4



### TRACK FOCUSED

Internal architecture focuses on producing high peak power plus delivering strong low-to mid-range power for quick acceleration.

7-SPOKE MARCHESINI FORGED WHEELS (NINJA ZX-10R SE AND RR)



DUAL DIRECTION KAWASAKI QUICK SHIFTER (NINJA ZX-10R SE AND RR)



DISTINCTIVE GREEN HIGHLIGHTS (NINJA ZX-10R SE)



# Kawasaki Electronic Control Suspension

### MOST ADVANCED TECHNOLOGY

Stroke sensors and adjustment solenoids built into the suspension units themselves ensure the system is both discreet and highly efficient.

### SPEAKING OF SPEED

With an information update speed measured in milliseconds, the interpretation of input and subsequent suspension adjustment is almost instantaneous. Effectively the suspension is being constantly refined and adjusted to suit the prevailing road surface plus the demands of machine dynamics and rider input.

Kawasaki Electronic Control Suspension only on the Ninja ZX-10R SE.







**RACE-READY ENGINE**

Featuring a modified cylinder head equipped to take higher lift racing camshafts and new reinforced crankcases for increased durability.

**DLC COATED TAPPETS**

The tappets with DLC low friction surface coating offer reduced mechanical loss – essential on a race tuned engine.

Only on Ninja ZX-10RR

▼ **SLEEK AND STYLISH**

Resplendent in the evocative Kawasaki Racing Team black and white “Winter Test” livery.



**Features exclusive to Ninja ZX-10RR**  
**1.** Kawasaki Quickshifter System allows both clutchless upshifts and downshifts, contributing to raceready performance. Designed for effective sport riding, KQS can also be used on the street above 2,500 rpm **2.** “RR” logo raised embossed into the engine cover helps distinguish the Ninja ZX-10RR. **3.** Revised front and rear suspension settings to match the Ninja ZX-10RR’s single-seat specification and new wheels and tyres. **4.** With race-readiness a priority, the Ninja ZX-10RR is designated a single-seat model. **5.** Specially designed Marchesini 7-spoke multi-directional forged wheels contribute to lighter handling – especially when changing direction.





# ACCESSORIES NINJA ZX-10R

Offering the same research and development as the Ninja ZX-10R, these factory approved accessories are crafted to offer Ninja levels of performance.

Also available are our accessorised packages. Ask for these at your local dealer.

## PERFORMANCE PACKAGE INCLUDES:

- AKRAPOVIČ CARBON SILENCER
- PILLION SEAT COVER  
(STANDARD ON NINJA ZX-10RR)
- KNEE PADS (NOT INCLUDED IN  
NINJA ZX-10RR PERFORMANCE PACKAGE)



AKRAPOVIČ CARBON SILENCER



FRONT AXLE PROTECTOR



ENGINE SLIDERS



PILLION SEAT COVER



KNEE PADS

## Ninja ZX-10R Race Kit parts

Contact your dealer for a wide selection of Kawasaki Racing Parts available exclusively for the track.





# NINJA 650

SPORTBIKE PERFORMANCE.  
VERSATILE CONVENIENCE.



The distinct Ninja personality of the  
Ninja 650 offers both sporting  
performance and in-town versatility.

# NINJA 650

## features

- ABS brake system • 649 cm<sup>3</sup> Parallel Twin engine • 68 PS • Lightweight trellis frame
- Sporty 41 mm telescopic front suspension • Horizontal Back-link rear suspension
- Under engine exhaust • Economical Riding Indicator • Gear position indicator • Low seat height, 790 mm • Adjustable clutch and brake levers • Assist & Slipper clutch
- Rider and pillion seating comfort • Luggage options • 15 litre fuel tank
- Optional ERGO-FIT high seat • A2 License compliant (optional)

## ▼ TAKE CONTROL

Stylish Multi function LCD display with gear position indicator. Separate handlebars contribute to the Ninja 650's relatively upright position.



LIME GREEN / EBONY  
(KRT EDITION)

PEARL STORM GRAY / EBONY

CANDY PLASMA BLUE



**RESPONSIVE PARALLEL TWIN**  
Tuning of the 649 cm<sup>3</sup> Parallel Twin engine focused on achieving a throttle response that balanced a powerful feeling and a quick-revving character.

**ATTRACTIVE UNDER-ENGINE MUFFLER**

**DUAL PISTON CALIPERS, PETAL DISCS**

**5-WAY ADJUSTABLE CLUTCH AND BRAKE LEVER**



## Ninja style

Sleek bodywork includes a sharp front cowl with a strong resemblance to the other Ninja models.

# Strong Ninja style, everyday versatility

## ADJUSTABLE WINDSHIELD ►

Sporty windshield has three positions covering a total range of 60 mm.



# ACCESSORIES NINJA 650

**Make the very most of your riding fun plus add a personal dash of stylish practicality with these factory developed genuine accessory items.**

**Also available are our accessorised packages. Ask for these at your local dealer.**

**PERFORMANCE PACKAGE INCLUDES:**

- SMOKED WINDSHIELD
- PILLION SEAT COVER
- TITANIUM AKRAPOVIČ EXHAUST
- TANK PAD

**TOURER PACKAGE INCLUDES:**

- CLEAR TOURING WINDSHIELD
- SEMI-SOFT PANNIER SET
- TANK PAD
- KNEE PADS
- FRAME SLIDERS



**AKRAPOVIČ TITANIUM EXHAUST**



**PILLION SEAT COVER**



**4L TANK BAG**



**TANK PAD**



**FRAME SLIDERS**



**12V POWER OUTLET**



**U-LOCK**



**28L SEMI-SOFT PANNIER SET**



**30L TOP CASE**



**SMOKE AND LARGE SCREEN**



# NINJA 400

STREET BORN -  
TRACK INSPIRED





Impressive, sharp-styled and accessible street focused sports machine offering excitement and ease of riding.

# NINJA 400

## features

- ABS brake system • 399 cm<sup>3</sup> Parallel Twin engine • 45 PS • Lightweight trellis frame
- Sporty 41 mm telescopic front suspension • Horizontal Back-link rear suspension
- Economical Riding Indicator • Gear position indicator • Low 785 mm seat height
- Assist & Slipper clutch • 14 litre fuel tank • Generous wind protection
- Nina H2 inspired chin spoiler • LED headlight • Optional ERGO-FIT high seat
- A2 License compliant

## ▼ LIGHT WEIGHT

A Ninja H2 style trellis frame contributes significantly to light weight.



LIME GREEN / EBONY  
(KRT EDITION)

METALIC SPARK BLACK





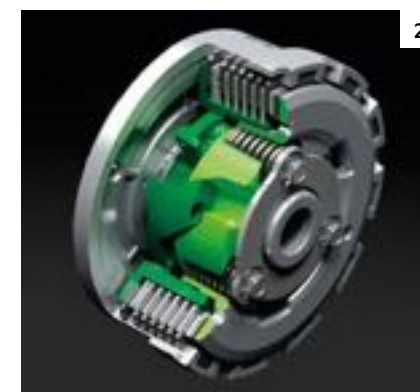
#### MODERN INSTRUMENT CLUSTER

A sophisticated instrument design features a large analogue tachometer with warning lamps on one side, and a gear position indicator and multi-function LCD screen on the other.

## In a league of its own

#### NINJA

The large volume bodywork with hints of Ninja H2 and Ninja ZX-10R styling attracts attention and gives a great level of wind protection.



**1.** Ninja engine delivers improved power and torque over its 300cc predecessor; the smooth response and abundant low-end torque aid throttle control for new and experienced riders alike. **2.** The Assist & Slipper clutch offers a lighter clutch lever feel and prevents rear wheel skipping on quick downshifts. **3.** Ninja ZX-10R inspired LED tail light **4.** LED headlamps contribute to the sharp looks and high visibility. **5.** Large dual Ø 310 mm petal discs, dual piston caliper and Bosch ABS delivers front brake power and feel.



# ACCESSORIES NINJA 400

**It's those extra little touches that encourage you to fine tune your Ninja 400. Kawasaki Genuine Accessories carry our factory warranty and personalise the overall look of your Ninja.**

**Ask your local dealer about the Ninja 400 Performance package.**

**PACKAGE INCLUDES:**

- AKRAPOVIČ EXHAUST MUFFLER
- PILLION SEAT COVER
- TANKPAD



**TITANIUM AKRAPOVIČ EXHAUST MUFFLER**



**PILLION SEAT COVER**



**LARGE SCREEN - SMOKE OR CLEAR**



**12V POWER OUTLET**



**ERGO-FIT HIGH SEAT (+30 MM)**

**OTHER GENUINE ACCESSORIES:**

- FRAME SLIDERS
- TANK PAD
- TANK BAG
- RADIATOR SCREEN
- WHEEL RIM TAPE



Kawasaki  
GENUINE PRODUCTS

# KAWASAKI SUPERSPORT GENUINE PRODUCTS

Maintain the looks, performance and value of your machine by using genuine Kawasaki spare parts. Only Kawasaki genuine spare parts deliver ultimate peace of mind and are available from any Kawasaki dealer. Rest easy knowing you have fitted the best parts bar none for your Kawasaki motorcycle.

K-CARE  
CUSTOMER SERVICE

K-CARE  
WARRANTY PLUS

## K-CARE

We've got you covered. K-Care has been created to enhance your ownership experience and is only available from, and endorsed by, Kawasaki. Including things like extended warranty, these valuable customer programmes are available exclusively for products officially imported by Kawasaki Motors N.V and sold through its official network.



Kawasaki  
GENUINE PRODUCTS

# KAWASAKI SUPERSPORT RIDING ESSENTIALS

Be prepared for any riding situation with our stylish range of riding gear. Made from the highest quality materials, our hard wearing clothing accessory range will never let you down. See the whole range at [www.kawasaki.eu/accessories](http://www.kawasaki.eu/accessories)



LEATHER SUIT ▲



NINJA LEATHER GLOVES ▼





**Kawasaki**  
GENUINE PRODUCTS

# CLOTHING & MERCHANDISE

Top gear. Crafted with as much care as your motorcycle, choose from a variety of Kawasaki clothing and merchandise, each item crafted to enhance your riding and leisure experience.

[www.kawasaki.eu/accessories](http://www.kawasaki.eu/accessories)



## 2018 NINJA Specifications

MODEL	Ninja ZX-10R / Ninja ZX-10R SE / Ninja ZX-10RR	Ninja 650	Ninja 400
Engine type	Liquid-cooled, 4-stroke In-Line Four	Liquid-cooled, 4-stroke Parallel Twin	Liquid-cooled, 4-stroke Parallel Twin
Displacement	998 cm <sup>3</sup>	649 cm <sup>3</sup>	399 cm <sup>3</sup>
Bore x stroke	76.0 x 55.0 mm	83.0 x 60.0 mm	70 x 51.8 mm
Compression ratio	13.0:1	10.8:1	11.5:1
Maximum power	147.1 kW {200 PS} / 13,000 rpm	50.2 kW {68 PS} / 8,000 rpm	33.4 kW {45 PS} / 10,000 rpm
Maximum power with RAM air	154.4 kW {210 PS} / 13,000 rpm		
Maximum torque	113.5 N·m {11.6 kgf·m} / 11,500 rpm	65.7 N·m {6.7 kgf·m} / 6,500 rpm	38 N·m {3.9 kgf·m} / 8,000 rpm
Valve system	DOHC, 16 valves	DOHC, 8 valves	DOHC, 8 valves
Fuel system	Fuel injection: Ø 47 mm x 4 with dual injection	Fuel injection: Ø 36 mm x 2 with dual throttle valves	Fuel injection: Ø 32 mm x 2
Lubrication	Forced lubrication, wet sump with oil cooler	Forced lubrication, semi-dry sump	Forced lubrication, wet sump
Transmission	6-speed, return, cassette	6-speed, return	6-speed, return
Final drive	Sealed chain	Sealed chain	Sealed chain
Clutch	Wet multi-disc, manual	Wet multi-disc, manual	Wet multi-disc, manual
Frame type	Twin spar, cast aluminium	Trellis, high-tensile steel	Trellis, high-tensile steel
Tyre, front	120/70ZR17M/C (58W)	120/70ZR17M/C (58W)	110/70R17 M/C 54H
Tyre, rear	190/55ZR17M/C (75W)	160/60ZR17M/C (69W)	150/60R17 M/C 66H
Suspension, front	43 mm inverted Balance Free Front Fork with external compression chamber, compression and rebound damping and spring preload adjustability, and top-out springs. (SE model has electronic controlled damping)	41 mm telescopic fork	41 mm telescopic fork
Suspension, rear	Horizontal Back-link, BFRC lite gas-charged shock with piggyback reservoir, compression and rebound damping and spring preload adjustability, and top-out spring. (SE model has electronic controlled damping)	Horizontal Back-link with adjustable preload	Bottom-Link Uni-Trak, gas-charged shock with adjustable preload
Brakes, front / Front brake type	Dual semi-floating 330 mm Brembo discs. Caliper: Dual radial-mount, Brembo M50 monobloc, opposed 4-piston	Dual semi-floating 300 mm petal discs. Caliper: Dual piston	Single semi-floating 310 mm petal discs. Caliper: Single balanced actuation dual piston
Brakes, rear / Rear Brake Type	Single 220 mm disc. Caliper: Single piston	Single 220 mm petal disc. Caliper: Single-piston	Single 220 mm petal disc. Caliper: Dual-piston
L x W x H	2,090 x 740 x 1,145 mm	2,055 x 740 x 1,135 mm	1,990 x 710 x 1,120 mm
Wheelbase	1,440 mm	1,410 mm	1,370 mm
Ground clearance	145 mm	130 mm	140 mm
Seat height	835 mm	790 mm	785 mm
Curb mass	206 kg (Ninja ZX-10R and ZX-10RR) / 208 kg (Ninja ZX-10R SE)	193 kg	168 kg
Fuel capacity	17 litres	15 litres	14 litres
Accessory package	Optional: Performance	Optional: Performance and Tourer	Optional: Performance

### Key to feature icons



IMU-Enhanced Chassis Orientation Awareness



Sport-Kawasaki Traction-Control



EURO4 compliant



Kawasaki Launch Control Mode



KQS (Kawasaki Quick Shifter)



Power Modes



Kawasaki Engine Brake Control



Electronic Throttle Valves



Dual Throttle Valves



Horizontal Back-link Rear Suspension



Economical Riding Indicator



Kawasaki Intelligent anti-lock Brake System



A2 license compliant



Assist & Slipper Clutch



Anti-lock Brake System



Kawasaki Cornering Management Function



Kawasaki Electronic Control Suspension



Always ride responsibly. Respect the law and the environment. Always ride within the limits of your skills, your experience, and your machine. Wear an approved helmet and protective clothing. Adhere to the instructions and maintenance schedule in your owner's manual. Never drink and ride. Specifications have been achieved by production models under standard operating conditions. Data are intended to describe motorcycles and their performance capabilities fairly but may not apply to every machine. Specifications likely to change without notice. Specifications, products and illustrated equipment may vary by market. The actions depicted here took place under controlled conditions with professional riders. Never attempt any action which is potentially dangerous. Valuable K-Care customer programmes are available exclusively for products officially imported by Kawasaki Motors Europe N.V. and sold through its official network.

**Copyright © 2018 Kawasaki Motors Europe N.V.**

All rights reserved. Subject to the exceptions provided for by law, no part of this publication may be reproduced and/or published in print, via the internet in any way be that commercial or social networking channels, by photocopying, on microfilm, electronically or in any other way without the prior written consent of the copyright holder.



The Kawasaki Genuine Products logo is a mark of quality. It can only be found on products manufactured to our exacting standards either by or on behalf of Kawasaki Motors Europe N.V.

**Kawasaki Motors Europe N.V.**

Jacobus Spijkerdreef 1-3  
2132 PZ Hoofddorp  
The Netherlands

E99941-3068

**For more information, please visit [www.kawasaki.eu](http://www.kawasaki.eu)**

*Your official Kawasaki dealer:*

**You Tube**

